

Temporal range of taxa

Taxon

ReptiliSaurischia

Osteichthyes

Erpetonyx
Eudibamus
Eunotosaurus
Milleropsis
Teratosaurus
Eomurruna
Ctenosauriscus
Tantalognathus
Crassigyrinus
Novascoticus
Limnostygis
Macrerpeton
Limnoscelis
Zatrachys
Pleuronoura
Chelydosaurus
Stephanospondylus
Llistrofus
Intasuchus
Cotylorhynchus
Ingentidens
Titanophoneus
Trochorhinus
Lycedops
Alopecideops
Elph
Rhineceps
Lunaepes
Emyduranus
Aulacephalodon
Triadobatrachus
Luzocephalus
Trematosaurus
Bathynathus

360

340

320

300

280

260

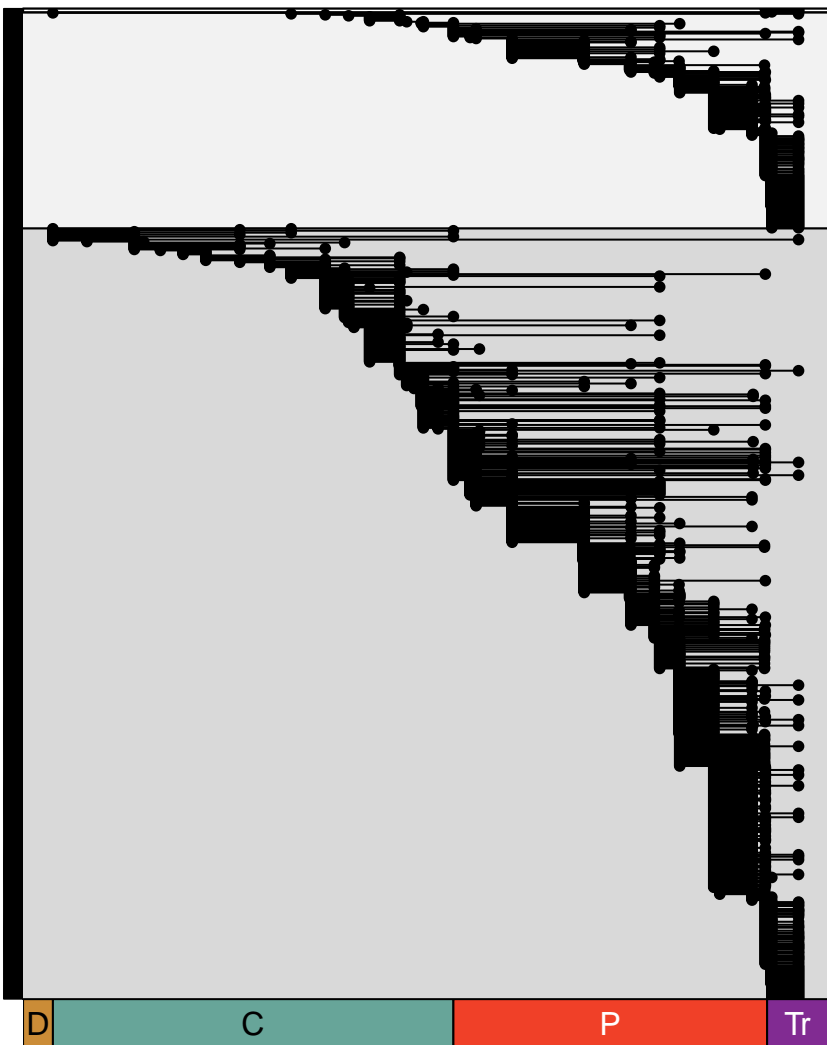
Time (Ma)

D

C

P

Tr



Temporal range of taxa

