

# VAR, SVAR and SVEC Models: Implementation Within R Package vars

Bernhard Pfaff  
Kronberg im Taunus

---

## Abstract

The structure of the package **vars** and its implementation of vector autoregressive-, structural vector autoregressive- and structural vector error correction models are explained in this paper. In addition to the three cornerstone functions `VAR()`, `SVAR()` and `SVEC()` for estimating such models, functions for diagnostic testing, estimation of a restricted models, prediction, causality analysis, impulse response analysis and forecast error variance decomposition are provided too. It is further possible to convert vector error correction models into their level VAR representation. The different methods and functions are elucidated by employing a macroeconomic data set for Canada. However, the focus in this writing is on the implementation part rather than the usage of the tools at hand.

*Keywords:* ~vector autoregressive models, structural vector autoregressive models, structural vector error correction models, R, **vars**.

---

## 1. Introduction

Since the critique of [Sims \(1980\)](#) in the early eighties of the last century, multivariate data analysis in the context of vector autoregressive models (henceforth: VAR) has evolved as a standard instrument in econometrics.<sup>1</sup> Because statistical tests are frequently used in determining inter-dependencies and dynamic relationships between variables, this methodology was soon enriched by incorporating non-statistical a priori information. VAR models explain the endogenous variables solely by their own history, apart from deterministic regressors. In contrast, structural vector autoregressive models (henceforth: SVAR) allow the explicit modeling of contemporaneous interdependence between the left-hand side variables. Hence, these types of models try to bypass the shortcomings of VAR models. At the same time as Sims jeopardized the paradigm of multiple structural equation models laid out by the Cowles Foundation in the 1940s and 1950s, [Granger \(1981\)](#) and [Engle and Granger \(1987\)](#) endowed econometricians with a powerful tool for modeling and testing economic relationships, namely, the concept of cointegration. Nowadays these branches of research are unified in the form of vector error correction (henceforth: VECM) and structural vector error correction models (henceforth: SVEC). A thorough theoretical exposition of all these models is provided in the monographs of [Lütkepohl \(2006\)](#), [Hendry \(1995\)](#), [Johansen \(1995\)](#), [Hamilton \(1994\)](#), [Banerjee, Dolado, Galbraith, and Hendry \(1993\)](#).

To the author's knowledge, currently only functions in the base distribution of R and in

---

<sup>1</sup>This vignette has been publicized as an article in the Journal of Statistical Software (see [Pfaff 2008](#)).

the CRAN (Comprehensive R Archive Network) packages **dse** (Gilbert 2000, 1995, 1993) and **fArma** (Würtz 2007) are made available for estimating ARIMA and VARIMA time series models. Although the CRAN package **MSBVAR** (Brandt and Appleby 2007) provides methods for estimating frequentist and Bayesian vector autoregression (BVAR) models, the methods and functions provided in the package **vars** try to fill a gap in the econometrics' methods landscape of R by providing the “standard” tools in the context of VAR, SVAR and SVEC analysis.

This article is structured as follows: in the next section the considered models, i.e., VAR, SVAR, VECM and SVEC, are presented. The structure of the package as well as the implemented methods and functions are explained in Section 3. In the last part, examples of applying the tools contained in **vars** are exhibited. Finally, a summary and a computational details section conclude this article.

## 2. The considered models

### 2.1. Vector autoregressive models

In its basic form, a VAR consists of a set of  $K$  endogenous variables  $\mathbf{y}_t = (y_{1t}, \dots, y_{kt}, \dots, y_{Kt})$  for  $k = 1, \dots, K$ . The VAR( $p$ )-process is then defined as:<sup>2</sup>

$$\mathbf{y}_t = A_1 \mathbf{y}_{t-1} + \dots + A_p \mathbf{y}_{t-p} + \mathbf{u}_t \quad , \quad (1)$$

with  $A_i$  are  $(K \times K)$  coefficient matrices for  $i = 1, \dots, p$  and  $\mathbf{u}_t$  is a  $K$ -dimensional process with  $E(\mathbf{u}_t) = \mathbf{0}$  and time invariant positive definite covariance matrix  $E(\mathbf{u}_t \mathbf{u}_t^\top) = \Sigma_{\mathbf{u}}$  (white noise).

One important characteristic of a VAR( $p$ )-process is its stability. This means that it generates stationary time series with time invariant means, variances and covariance structure, given sufficient starting values. One can check this by evaluating the characteristic polynomial:

$$\det(I_K - A_1 z - \dots - A_p z^p) \neq 0 \quad \text{for } |z| \leq 1 \quad . \quad (2)$$

If the solution of the above equation has a root for  $z = 1$ , then either some or all variables in the VAR( $p$ )-process are integrated of order one, i.e.,  $I(1)$ . It might be the case, that cointegration between the variables does exist. This instance can then be better analyzed in the context of a VECM.

In practice, the stability of an empirical VAR( $p$ )-process can be analyzed by considering the companion form and calculating the eigenvalues of the coefficient matrix. A VAR( $p$ )-process can be written as a VAR(1)-process:

$$\boldsymbol{\xi}_t = A \boldsymbol{\xi}_{t-1} + \mathbf{v}_t \quad , \quad (3)$$

---

<sup>2</sup>Without loss of generality, deterministic regressors are suppressed in the following notation. Furthermore, vectors are assigned by small bold letters and matrices by capital letters. Scalars are written out as small letters, which are possibly sub-scripted.

with:

$$\boldsymbol{\xi}_t = \begin{bmatrix} \mathbf{y}_t \\ \vdots \\ \mathbf{y}_{t-p+1} \end{bmatrix}, \quad A = \begin{bmatrix} A_1 & A_2 & \cdots & A_{p-1} & A_p \\ I & 0 & \cdots & 0 & 0 \\ 0 & I & \cdots & 0 & 0 \\ \vdots & \vdots & \ddots & \vdots & \vdots \\ 0 & 0 & \cdots & I & 0 \end{bmatrix}, \quad \mathbf{v}_t = \begin{bmatrix} \mathbf{u}_t \\ \mathbf{0} \\ \vdots \\ \mathbf{0} \end{bmatrix}, \quad (4)$$

whereby the dimensions of the stacked vectors  $\boldsymbol{\xi}_t$  and  $\mathbf{v}_t$  is  $(KP \times 1)$  and the dimension of the matrix  $A$  is  $(Kp \times Kp)$ . If the moduli of the eigenvalues of  $A$  are less than one, then the VAR( $p$ )-process is stable.

For a given sample of the endogenous variables  $\mathbf{y}_1, \dots, \mathbf{y}_T$  and sufficient presample values  $\mathbf{y}_{-p+1}, \dots, \mathbf{y}_0$ , the coefficients of a VAR( $p$ )-process can be estimated efficiently by least-squares applied separately to each of the equations.

Once a VAR( $p$ ) model has been estimated, the avenue is wide open for further analysis. A researcher might/should be interested in diagnostic tests, such as testing for the absence of autocorrelation, heteroscedasticity or non-normality in the error process. He might be interested further in causal inference, forecasting and/or diagnosing the empirical model's dynamic behavior, i.e., impulse response functions (henceforth: IRF) and forecast error variance decomposition (henceforth: FEVD). The latter two are based upon the Wold moving average decomposition for stable VAR( $p$ )-processes which is defined as:

$$\mathbf{y}_t = \Phi_0 \mathbf{u}_t + \Phi_1 \mathbf{u}_{t-1} + \Phi_2 \mathbf{u}_{t-2} + \dots, \quad (5)$$

with  $\Phi_0 = I_K$  and  $\Phi_s$  can be computed recursively according to:

$$\Phi_s = \sum_{j=1}^s \Phi_{s-j} A_j \text{ for } s = 1, 2, \dots, \quad (6)$$

whereby  $A_j = 0$  for  $j > p$ .

Finally, forecasts for horizons  $h \geq 1$  of an empirical VAR( $p$ )-process can be generated recursively according to:

$$\mathbf{y}_{T+h|T} = A_1 \mathbf{y}_{T+h-1|T} + \dots + A_p \mathbf{y}_{T+h-p|T}, \quad (7)$$

where  $\mathbf{y}_{T+j|T} = \mathbf{y}_{T+j}$  for  $j \leq 0$ . The forecast error covariance matrix is given as:

$$\text{Cov} \left( \begin{bmatrix} \mathbf{y}_{T+1} - \mathbf{y}_{T+1|T} \\ \vdots \\ \mathbf{y}_{T+h} - \mathbf{y}_{T+h|T} \end{bmatrix} \right) = \begin{bmatrix} I & 0 & \cdots & 0 \\ \Phi_1 & I & & 0 \\ \vdots & & \ddots & 0 \\ \Phi_{h-1} & \Phi_{h-2} & \cdots & I \end{bmatrix} (\Sigma_{\mathbf{u}} \otimes I_h) \begin{bmatrix} I & 0 & \cdots & 0 \\ \Phi_1 & I & & 0 \\ \vdots & & \ddots & 0 \\ \Phi_{h-1} & \Phi_{h-2} & \cdots & I \end{bmatrix}^\top$$

and the matrices  $\Phi_i$  are the empirical coefficient matrices of the Wold moving average representation of a stable VAR( $p$ )-process as shown above. The operator  $\otimes$  is the Kronecker product.

## 2.2. Structural vector autoregressive models

Recall from Section~2.1 the definition of a VAR( $p$ )-process, in particular Equation~1. A VAR( $p$ ) can be interpreted as a reduced form model. A SVAR model is its structural form and is defined as:

$$A\mathbf{y}_t = A_1^*\mathbf{y}_{t-1} + \dots + A_p^*\mathbf{y}_{t-p} + B\boldsymbol{\varepsilon}_t. \quad (8)$$

It is assumed that the structural errors,  $\boldsymbol{\varepsilon}_t$ , are white noise and the coefficient matrices  $A_i^*$  for  $i = 1, \dots, p$ , are structural coefficients that differ in general from their reduced form counterparts. To see this, consider the resulting equation by left-multiplying Equation~8 with the inverse of  $A$ :

$$\begin{aligned} \mathbf{y}_t &= A^{-1}A_1^*\mathbf{y}_{t-1} + \dots + A^{-1}A_p^*\mathbf{y}_{t-p} + A^{-1}B\boldsymbol{\varepsilon}_t \\ \mathbf{y}_t &= A_1\mathbf{y}_{t-1} + \dots + A_p\mathbf{y}_{t-p} + \mathbf{u}_t. \end{aligned} \quad (9)$$

A SVAR model can be used to identify shocks and trace these out by employing IRA and/or FEVD through imposing restrictions on the matrices  $A$  and/or  $B$ . Incidentally, though a SVAR model is a structural model, it departs from a reduced form VAR( $p$ ) model and only restrictions for  $A$  and  $B$  can be added. It should be noted that the reduced form residuals can be retrieved from a SVAR model by  $\mathbf{u}_t = A^{-1}B\boldsymbol{\varepsilon}_t$  and its variance-covariance matrix by  $\Sigma_{\mathbf{u}} = A^{-1}BB^\top A^{-1\top}$ .

Depending on the imposed restrictions, three types of SVAR models can be distinguished:

- $A$  model:  $B$  is set to  $I_K$   
(minimum number of restrictions for identification is  $K(K-1)/2$ ).
- $B$  model:  $A$  is set to  $I_K$   
(minimum number of restrictions to be imposed for identification is the same as for  $A$  model).
- $AB$  model: restrictions can be placed on both matrices  
(minimum number of restrictions for identification is  $K^2 + K(K-1)/2$ ).

The parameters are estimated by minimizing the negative of the concentrated log-likelihood function:

$$\begin{aligned} \ln L_c(A, B) &= -\frac{KT}{2} \ln(2\pi) + \frac{T}{2} \ln |A|^2 - \frac{T}{2} \ln |B|^2 \\ &\quad - \frac{T}{2} \text{tr}(A^\top B^{-1\top} B^{-1} A \tilde{\Sigma}_{\mathbf{u}}), \end{aligned} \quad (10)$$

whereby  $\tilde{\Sigma}_{\mathbf{u}}$  signifies an estimate of the reduced form variance/covariance matrix for the error process.

### 2.3. Vector error correction models

Reconsider the VAR from Equation~1:

$$\mathbf{y}_t = A_1\mathbf{y}_{t-1} + \dots + A_p\mathbf{y}_{t-p} + \mathbf{u}_t, \quad (11)$$

The following vector error correction specifications do exist, which can be estimated with function `ca.jo()` contained in `urca` for more details (Pfaff 2006):

$$\Delta\mathbf{y}_t = \boldsymbol{\alpha}\boldsymbol{\beta}^\top \mathbf{y}_{t-p} + \Gamma_1\Delta\mathbf{y}_{t-1} + \dots + \Gamma_{p-1}\mathbf{y}_{t-p+1} + \mathbf{u}_t, \quad (12)$$

with

$$\Gamma_i = -(I - A_1 - \dots - A_i), \quad i = 1, \dots, p-1. \quad (13)$$

and

$$\Pi = \alpha\beta^\top = -(I - A_1 - \dots - A_p) \quad . \quad (14)$$

The  $\Gamma_i$  matrices contain the cumulative long-run impacts, hence this VECM specification is signified by “long-run” form. The other specification is given as follows and is commonly employed:

$$\Delta \mathbf{y}_t = \alpha\beta^\top \mathbf{y}_{t-1} + \Gamma_1 \Delta \mathbf{y}_{t-1} + \dots + \Gamma_{p-1} \mathbf{y}_{t-p+1} + \mathbf{u}_t \quad , \quad (15)$$

with

$$\Gamma_i = -(A_{i+1} + \dots + A_p) \quad i = 1, \dots, p-1. \quad (16)$$

Equation~14 applies to this specification too. Hence, the  $\Pi$  matrix is the same as in the first specification. However, the  $\Gamma_i$  matrices now differ, in the sense that they measure transitory effects. Therefore this specification is signified as “transitory” form. In case of cointegration the matrix  $\Pi = \alpha\beta^\top$  is of reduced rank. The dimensions of  $\alpha$  and  $\beta$  is  $K \times r$  and  $r$  is the cointegration rank, i.e. how many long-run relationships between the variables  $\mathbf{y}_t$  do exist. The matrix  $\alpha$  is the loading matrix and the coefficients of the long-run relationships are contained in  $\beta$ .

## 2.4. Structural vector error correction models

Reconsider the VECM from Equation~15. It is possible to apply the same reasoning of SVAR models to SVEC models, in particular when the equivalent level-VAR representation of the VECM is used. However, the information contained in the cointegration properties of the variables are thereby not used for identifying restrictions on the structural shocks. Hence, typically a  $B$  model is assumed whence a SVEC model is specified and estimated.

$$\Delta \mathbf{y}_t = \alpha\beta^\top \mathbf{y}_{t-1} + \Gamma_1 \Delta \mathbf{y}_{t-1} + \dots + \Gamma_{p-1} \mathbf{y}_{t-p+1} + B\boldsymbol{\varepsilon}_t \quad , \quad (17)$$

whereby  $\mathbf{u}_t = B\boldsymbol{\varepsilon}_t$  and  $\boldsymbol{\varepsilon}_t \sim N(\mathbf{0}, I_K)$ . In order to exploit this information, one considers the Beveridge-Nelson moving average representation of the variables  $\mathbf{y}_t$  if they adhere to the VECM process as in Equation~15:

$$\mathbf{y}_t = \Xi \sum_{i=1}^t \mathbf{u}_i + \sum_{j=0}^{\infty} \Xi_j^* \mathbf{u}_{t-j} + \mathbf{y}_0^* \quad . \quad (18)$$

The variables contained in  $\mathbf{y}_t$  can be decomposed into a part that is integrated of order one and a part that is integrated of order zero. The first term on the right-hand-side of Equation~18 is referred to the “common trends” of the system and this term drives the system  $\mathbf{y}_t$ . The middle term is integrated of order zero and it is assumed that the infinite sum is bounded, i.e.  $\Xi_j^*$  converge to zero as  $j \rightarrow \infty$ . The initial values are captured by  $\mathbf{y}_0^*$ . For the modeling of SVEC the interest centers on the common trends in which the long-run effects of shocks are captured. The matrix  $\Xi$  is of reduced rank  $K - r$ , whereby  $r$  is the count of stationary cointegration relationships. The matrix is defined as:

$$\Xi = \beta_\perp \left[ \alpha_\perp^\top \left( I_K - \sum_{i=1}^{p-1} \Gamma_i \right) \beta_\perp \right]^{-1} \alpha_\perp^\top \quad . \quad (19)$$

Because of its reduced rank only be  $K - r$  common trends drive the system. Therefore, by knowing the rank of  $\Pi$  one can then conclude that at most  $r$  of the structural errors can have a transitory effect. This implies that at most  $r$  columns of  $\Xi$  can be set to zero. One can combine the Beveridge-Nelson decomposition with the relationship between the VECM error terms and the structural innovations. The common trends term is then  $\Xi B \sum_{t=1}^{\infty} \varepsilon_t$  and the long-run effects of the structural innovations are captured by the matrix  $\Xi B$ . The contemporaneous effects of the structural errors are contained in the matrix  $B$ . As in the case of SVAR models of type B one needs for local just-identified SVEC models  $\frac{1}{2}K(K - 1)$  restrictions. The cointegration structure of the model provides  $r(K - r)$  restrictions on the long-run matrix. The remaining restrictions can be placed on either matrix, whereby at least  $r(r - 1)/2$  of them must be imposed directly on the contemporaneous matrix  $B$ .

### 3. Classes, methods, and functions

#### 3.1. Overview

In Table~1 the structure of the package **vars** is outlined. The functions and methods will be addressed briefly here. A more detailed discussion is provided in the following subsections.

When a VAR( $p$ ) has been fitted with `VAR()` one obtains a list object with class attribute `varest`.

```
VAR(y, p = 1, type = c("const", "trend", "both", "none"),
    season = NULL, exogen = NULL, lag.max = NULL,
    ic = c("AIC", "HQ", "SC", "FPE"))
```

As one can see from Table~1, basically all relevant investigations can be conducted with the methods and functions made available for this kind of object. Plotting, prediction, forecast error variance decomposition, impulse response analysis, log-likelihood, MA representations and summary are implemented as methods. Diagnostic testing, restricted VAR estimation, stability analysis in the sense of root-stability and empirical fluctuation processes as well as causality analysis are implemented as functions. Some of the methods have their own `print` and `plot` methods. Furthermore, extractor methods for obtaining the residuals, the fitted values and the estimated coefficients do exist.

In Section~2.2 it has been argued that a VAR can be viewed as particular SVAR model. The function `SVAR()` requires therefore an object of class `varest`. The default estimation method of a SVAR model is a scoring algorithm, as proposed by Amisano and Giannini (1997). The restrictions for the  $A$ ,  $B$  or  $A$  and  $B$  matrices have to be provided in explicit form as arguments `Amat` and/or `Bmat`. Alternatively, the different SVAR types can be estimated by directly minimizing the negative log-likelihood. The latter is used if the estimation method has then to be set to `estmethod = "direct"`.

```
SVAR(x, estmethod = c("scoring", "direct"), Amat = NULL, Bmat = NULL,
    start = NULL, max.iter = 100, conv.crit = 1e-07, maxls = 1,
    lrtest = TRUE, ...)
```

For objects with class attribute `svarest` forecast error variance decomposition, impulse response analysis, retrieval of its MA representation, the value of the log-likelihood as well as a

Function or method	Class	Methods for class	Functions for class
VAR	varest	coef, fevd, fitted, irf, logLik, Phi, plot, predict, print, Psi, resid, summary	Acoef, arch.test, Bcoef, BQ, causality, normality.test, restrict, roots, serial.test, stability
SVAR	svarest	fevd, irf, logLik, Phi, print, summary	
SVEC	svecest	fevd, irf, logLik, Phi, print, summary	
vec2var	vec2var	fevd, fitted, irf, logLik, Phi, predict, print, Psi, resid	arch.test, normality.test, serial.test
fevd	varfevd	plot, print	
irf	varirf	plot, print	
predict	varprd	plot, print	fanchart
summary	varsum, svarsum, svecsum	print	
arch.test	varcheck	plot, print	
normality.test	varcheck	plot, print	
serial.test	varcheck	plot, print	
stability	varstabil	plot, print	

Table 1: Structure of package **vars**.

summary are available as methods.

Structural vector error correction models can be estimated with the function `SVEC()`.

```
SVEC(x, LR = NULL, SR = NULL, r = 1, start = NULL, max.iter = 100,
      conv.crit = 1e-07, maxls = 1, lrtest = TRUE, boot = FALSE, runs = 100)
```

The returned object has class attribute `svecest`. The same methods that are available for objects of class `svarest` are at hand for these kind of objects.

Finally, objects of formal class `ca.jo` generated with function `ca.jo()` contained in the package **urca** can be converted to their level VAR representation with the function `vec2var()`. The resultant object has class attribute `vec2var` and the analytical tools are likewise applicable as in the case of objects with class attribute `varest`.

```
vec2var(z, r = 1)
```

### 3.2. Cornerstone functions

The function for estimating a VAR( $p$ ) model is `VAR()`. It consists of seven arguments. A data matrix or an object that can be coerced to it has to be provided for `y`. The lag-order

has to be submitted as integer for `p`. In general, this lag-order is unknown and `VAR()` offers the possibility to automatically determine an appropriate lag inclusion. This is achieved by by setting `lag.max` to an upper bound integer value and `ic` to a desired information criteria. Possible options are Akaike (`ic = "AIC"`), Hannan-Quinn (`ic = "HQ"`), Schwarz (`ic = "SC"`) or the forecast prediction error (`ic = "FPE"`). The calculations are based upon the same sample size. That is `lag.max` values are used for each of the estimated models as starting values.<sup>3</sup> The type of deterministic regressors to include into the  $\text{VAR}(p)$  is set by the argument `type`. Possible values are to include a constant, a trend, both or none deterministic regressors. In addition, the inclusion of centered seasonal dummy variables can be achieved by setting `season` to the seasonal frequency of the data (e.g., for quarterly data: `season = 4`). Finally, exogenous variables, like intervention dummies, can be included by providing a matrix object for `exogen`.

The `summary` method returns – aside of descriptive information about the estimated VAR – the estimated equations as well as the variance/covariance and the correlation matrix of the residuals. It is further possible to report summary results for selected equations only. This is achieved by using the function's argument `equation` which expects a character vector with the names of the desired endogenous variables. The `plot` method displays for each equation in a VAR a diagram of fit, a residual plot, the auto-correlation and partial auto-correlation function of the residuals in a single layout. If the `plot` method is called interactively, the user is requested to enter `<RETURN>` for commencing to the next plot. It is further possible to plot the results for a subset of endogenous variables only. This is achieved by using the argument `name` in the `plot` method. The appearance of the plot can be adjusted to ones liking by setting the relevant arguments of the `plot` method.

A SVAR model is estimated with the function `SVAR()`. An object with class attribute `varest` has to be provided as argument for `x`. The structural parameters are estimated either by a scoring algorithm (the default) or by direct minimization of the negative log-likelihood function. Whether an  $A$ ,  $B$  or  $AB$  model will be estimated, is dependent on the setting for `Amat` and `Bmat`. If a restriction matrix for `Amat` with dimension  $(K \times K)$  is provided and the argument `Bmat` is left `NULL`, an  $A$  model will be estimated. In this case `Bmat` is set internally to an identity matrix  $I_K$ . Alternatively, if only a matrix object for `Bmat` is provided and `Amat` is left unchanged, then a  $B$  model will be estimated and internally `Amat` is set to an identity matrix  $I_K$ . Finally, if matrix objects for both arguments are provided, then an  $AB$  model will be estimated. In all cases, the matrix elements to be estimated are marked by `NA` entries at the relevant positions. The user has the option to provide starting values for the unknown coefficients by providing a vector object for the argument `start`. If `start` is left `NULL`, then 0.1 will be used as the starting value for all coefficients. The arguments `max.iter`, `conv.crit` and `maxls` can be used for tuning the scoring algorithm. The maximum number of iterations is controlled by `max.iter`, the convergence criterion is set by `conv.crit` and the maximum step length is set by `maxls`. A likelihood ratio test is computed per default for over-identified systems. This default setting can be offset by `lrtest = FALSE`. If a just-identified has been set-up, a warning is issued that an over-identification test cannot be computed in case of `lrtest = TRUE`. The ellipsis argument (...) is passed to `optim()` in case of direct

---

<sup>3</sup>As an alternative one can use the function `VARselect()`. The result of this function is a list object with elements `selection` and `criteria`. The element `selection` is a vector of optimal lag length according to the above mentioned information criteria. The element `criteria` is a matrix containing the particular values for each of these criteria up to the maximal chosen lag order.



optimization.

The returned object of function `SVAR()` is a list with class attribute `svarest`. Dependent on the chosen model and if the argument `hessian = TRUE` has been set in case of `estmethod = "direct"`, the list elements `A`, `Ase`, `B`, `Bse` contain the estimated coefficient matrices with the numerical standard errors. The element `LRIM` does contain the long-run impact matrix in case a SVAR of type Blanchard & Quah is estimated with function `BQ()`, otherwise this element is `NULL` (see Blanchard and Quah 1989). The list element `Sigma.U` is the variance-covariance matrix of the reduced form residuals times 100, i.e.,  $\Sigma_U = A^{-1}BB^{\top}A^{-1\top} \times 100$ . The list element `LR` is an object with class attribute `htest`, holding the likelihood ratio over-identification test. The element `opt` is the returned object from function `optim()` in case `estmethod = "direct"` has been used. The remaining five list items are the vector of starting values, the SVAR model type, the `varest` object, the number of iterations and the call to `SVAR()`.

A SVEC model is estimated with the function `SVEC()`. The supplied object for the argument `x` must be of formal class `ca.jo`. The restrictions on the long-run and short-run structural coefficient matrices must be provided as arguments `LR` and `SR`, respectively. These matrices have either zero or `NA` entries as their elements. It is further necessary to specify the cointegration rank of the estimated VECM via the argument `r`. Likewise to `SVAR()`, the arguments `start`, `max.iter`, `conv.crit` and `maxls` can be used for tuning the scoring algorithm. The argument `lrtest` applies likewise as in `SVAR()`. Finally, the logical flag `boot` can be used for calculating standard errors by applying the bootstrap method to the SVEC. The count of repetition is set by the argument `runs`. The returned list object from `SVEC()` and its associated methods will be bespoke in Section 4, where a SVEC model is specified for the Canadian labor market.

Finally, with function `vec2var()` a VECM (i.e., an object of formal class `ca.jo`, generated by the function `ca.jo()` contained in the package `urca`) is transformed into its level-VAR representation. Aside of this argument the function requires the cointegrating rank as this information is needed for the transformation (see Equations 12–16). The `print` method does return the coefficient values, first for the lagged endogenous variables, next for the deterministic regressors.

### 3.3. Diagnostic testing

In the package `vars` functions for diagnostic testing are `arch.test()`, `normality.test()`, `serial.test()` and `stability()`. The former three functions return a list object with class attribute `varcheck` for which `plot` and `print` method exist. The plots – one for each equation – include a residual plot, an empirical distribution plot and the ACF and PACF of the residuals and their squares. The `plot` method offers additional arguments for adjusting its appearance. The implemented tests for heteroscedasticity are the univariate and multivariate ARCH test (see Engle 1982; Hamilton 1994; Lütkepohl 2006). The multivariate ARCH-LM test is based on the following regression (the univariate test can be considered as special case of the exhibition below and is skipped):

$$\text{vech}(\hat{\mathbf{u}}_t \hat{\mathbf{u}}_t^{\top}) = \boldsymbol{\beta}_0 + B_1 \text{vech}(\hat{\mathbf{u}}_{t-1} \hat{\mathbf{u}}_{t-1}^{\top}) + \dots + B_q \text{vech}(\hat{\mathbf{u}}_{t-q} \hat{\mathbf{u}}_{t-q}^{\top}) + \mathbf{v}_t, \quad (20)$$

whereby  $\mathbf{v}_t$  assigns a spherical error process and `vech` is the column-stacking operator for symmetric matrices that stacks the columns from the main diagonal on downward. The

dimension of  $\beta_0$  is  $\frac{1}{2}K(K+1)$  and for the coefficient matrices  $B_i$  with  $i = 1, \dots, q$ ,  $\frac{1}{2}K(K+1) \times \frac{1}{2}K(K+1)$ . The null hypothesis is:  $H_0 := B_1 = B_2 = \dots = B_q = 0$  and the alternative is:  $H_1 : B_1 \neq 0 \cap B_2 \neq 0 \cap \dots \cap B_q \neq 0$ . The test statistic is defined as:

$$\text{VARCH}_{LM}(q) = \frac{1}{2}TK(K+1)R_m^2, \quad (21)$$

with

$$R_m^2 = 1 - \frac{2}{K(K+1)} \text{tr}(\hat{\Omega}\hat{\Omega}_0^{-1}), \quad (22)$$

and  $\hat{\Omega}$  assigns the covariance matrix of the above defined regression model. This test statistic is distributed as  $\chi^2(qK^2(K+1)^2/4)$ .

The default is to compute the multivariate test only. If `multivariate.only = FALSE`, the univariate tests are computed too. In this case, the returned list object from `arch.test()` has three elements. The first element is the matrix of residuals. The second, signified by `arch.uni`, is a list object itself and holds the univariate test results for each of the series. The multivariate test result is contained in the third list element, signified by `arch.mul`.

`arch.test(x, lags.single = 16, lags.multi = 5, multivariate.only = TRUE)`

The returned tests have class attribute `htest`, hence the `print` method for these kind of objects is implicitly used as `print` method for objects of class `varcheck`. This applies likewise to the functions `normality.test()` and `serial.test()`, which will be bespoken next.

The Jarque-Bera normality tests for univariate and multivariate series are implemented and applied to the residuals of a VAR( $p$ ) as well as separate tests for multivariate skewness and kurtosis (see Bera and Jarque 1980, 1981; Jarque and Bera 1987; Lütkepohl 2006). The univariate versions of the Jarque-Bera test are applied to the residuals of each equation. A multivariate version of this test can be computed by using the residuals that are standardized by a Choleski decomposition of the variance-covariance matrix for the centered residuals. Please note, that in this case the test result is dependent upon the ordering of the variables. The test statistics for the multivariate case are defined as:

$$JB_{mv} = s_3^2 + s_4^2, \quad (23)$$

whereby  $s_3^2$  and  $s_4^2$  are computed according to:

$$s_3^2 = T\mathbf{b}_1^\top \mathbf{b}_1 / 6 \quad (24a)$$

$$s_4^2 = T(\mathbf{b}_2 - \mathbf{3}_K)^\top (\mathbf{b}_2 - \mathbf{3}_K) / 24, \quad (24b)$$

with  $\mathbf{b}_1$  and  $\mathbf{b}_2$  are the third and fourth non-central moment vectors of the standardized residuals  $\hat{\mathbf{u}}_t^s = \tilde{P}^-(\hat{\mathbf{u}}_t - \bar{\hat{\mathbf{u}}}_t)$  and  $\tilde{P}$  is a lower triangular matrix with positive diagonal such that  $\tilde{P}\tilde{P}^\top = \tilde{\Sigma}_{\mathbf{u}}$ , i.e., the Choleski decomposition of the residual covariance matrix. The test statistic  $JB_{mv}$  is distributed as  $\chi^2(2K)$  and the multivariate skewness,  $s_3^2$ , and kurtosis test,  $s_4^2$  are distributed as  $\chi^2(K)$ .

`normality.test(x, multivariate.only = TRUE)`

The matrix of residuals is the first element in the returned list object. The function's default is to compute the multivariate test statistics only. The univariate tests are returned if `multivariate.only = FALSE` is set. Similar to the returned list object of function `arch.test()` for this case, the univariate versions of the Jarque-Bera test are applied to the residuals of each equation and are contained in the second list element signified by `jb.uni`. The multivariate version of the test as well as multivariate tests for skewness and kurtosis are contained in the third list element signified by `jb.mul`.

For testing the lack of serial correlation in the residuals of a  $\text{VAR}(p)$ , a Portmanteau test and the Breusch-Godfrey LM test are implemented in the function `serial.test()`. For both tests small sample modifications can be calculated too, whereby the modification for the LM test has been introduced by [Edgerton and Shukur \(1999\)](#).

The Portmanteau statistic is defined as:

$$Q_h = T \sum_{j=1}^h \text{tr}(\hat{C}_j^\top \hat{C}_0^{-1} \hat{C}_j \hat{C}_0^{-1}) , \quad (25)$$

with  $\hat{C}_i = \frac{1}{T} \sum_{t=i+1}^T \hat{\mathbf{u}}_t \hat{\mathbf{u}}_{t-i}^\top$ . The test statistic has an approximate  $\chi^2(K^2h - n^*)$  distribution, and  $n^*$  is the number of coefficients excluding deterministic terms of a  $\text{VAR}(p)$ . The limiting distribution is only valid for  $h$  tending to infinity at a suitable rate with growing sample size. Hence, the trade-off is between a decent approximation to the  $\chi^2$  distribution and a loss in power of the test, when  $h$  is chosen too large. The small sample adjustment of the test statistic is given as:

$$Q_h^* = T^2 \sum_{j=1}^h \frac{1}{T-j} \text{tr}(\hat{C}_j^\top \hat{C}_0^{-1} \hat{C}_j \hat{C}_0^{-1}) , \quad (26)$$

and is computed if `type = "PT.adjusted"` is set.

The Breusch-Godfrey LM statistic is based upon the following auxiliary regressions (see [Breusch 1978](#); [Godfrey 1978](#)):

$$\hat{\mathbf{u}}_t = A_1 \mathbf{y}_{t-1} + \dots + A_p \mathbf{y}_{t-p} + C D_t + B_1 \hat{\mathbf{u}}_{t-1} + \dots + B_h \hat{\mathbf{u}}_{t-h} + \varepsilon_t . \quad (27)$$

The null hypothesis is:  $H_0 : B_1 = \dots = B_h = 0$  and correspondingly the alternative hypothesis is of the form  $H_1 : \exists B_i \neq 0 \text{ for } i = 1, 2, \dots, h$ . The test statistic is defined as:

$$LM_h = T(K - \text{tr}(\tilde{\Sigma}_R^{-1} \tilde{\Sigma}_e)) , \quad (28)$$

where  $\tilde{\Sigma}_R$  and  $\tilde{\Sigma}_e$  assign the residual covariance matrix of the restricted and unrestricted model, respectively. The test statistic  $LM_h$  is distributed as  $\chi^2(hK^2)$ . [Edgerton and Shukur \(1999\)](#) proposed a small sample correction, which is defined as:

$$LMF_h = \frac{1 - (1 - R_r^2)^{1/r}}{(1 - R_r^2)^{1/r}} \frac{Nr - q}{Km} , \quad (29)$$

with  $R_r^2 = 1 - |\tilde{\Sigma}_e|/|\tilde{\Sigma}_R|$ ,  $r = ((K^2m^2 - 4)/(K^2 + m^2 - 5))^{1/2}$ ,  $q = 1/2Km - 1$  and  $N = T - K - m - 1/2(K - m + 1)$ , whereby  $n$  is the number of regressors in the original system and  $m = Kh$ . The modified test statistic is distributed as  $F(hK^2, \text{int}(Nr - q))$ . This test statistic is returned if `type = "ES"` has been used.

```
serial.test(x, lags.pt = 16, lags.bg = 5,
  type = c("PT.asymptotic", "PT.adjusted", "BG", "ES"))
```

The test statistics are returned in the list element `serial` and have class attribute `htest`. Per default the asymptotic Portmanteau test is returned. The residuals are contained in the first list element.

The function `stability()` returns a list object with class attribute `varstabil`. The function itself is just a wrapper for the function `efp()` contained in the package `strucchange` (see Zeileis, Leisch, Hornik, and Kleiber 2002, for a detailed exposition of the package's capabilities). The first element of the returned list object is itself a list of objects with class attribute `efp`. Hence, the `plot` method for objects of class `varstabil` just calls the `plot` method for objects of class `efp`.

```
stability(x, type = c("OLS-CUSUM", "Rec-CUSUM", "Rec-MOSUM",
  "OLS-MOSUM", "RE", "ME", "Score-CUSUM", "Score-MOSUM", "fluctuation"),
  h = 0.15, dynamic = FALSE, rescale = TRUE)
```

### 3.4. Prediction, impulse responses and forecast error decomposition

A `predict` method for objects with class attribute `varest` or `vec2var` is available. The `n.ahead` forecasts are computed recursively for the estimated  $\text{VAR}(p)$ -process and a value for the forecast confidence interval can be provided too. Its default value is 0.95. The confidence interval is inferred from the empirical forecast error covariance matrix.

```
predict(object, ..., n.ahead = 10, ci = 0.95, dumvar = NULL)
```

The `predict` method returns a list with class attribute `varprd`. The forecasts are contained as a list in its first element signified as `fcst`. The second entry are the endogenous variables themselves. The last element is the submitted model object to `predict`. The `print` method returns the forecasts with upper and lower confidence levels, if applicable. The `plot` method draws the time series plots, whereby the start of the out-of-sample period is marked by a dashed vertical line. If this method is called interactively, the user is requested to browse through the graphs for each variable by hitting the <RETURN> key. For visualizing forecasts (i.e., objects with class attribute `varprd`) fan charts can be generated by the function `fanchart()` (see Britton, Fisher, and Whitley 1998). If the functional argument `color` is not set, the colors are taken from the gray color scheme. Likewise, if no confidence levels are supplied, then the fan charts are produced for confidence levels ranging from 0.1 to 0.9 with step size 0.1.

```
fanchart(x, colors = NULL, cis = NULL, names = NULL, main = NULL,
  ylab = NULL, xlab = NULL, col.y = NULL, nc, plot.type = c("multiple",
  "single"), mar = par("mar"), oma = par("oma"), ...)
```

The impulse response analysis is based upon the Wold moving average representation of a  $\text{VAR}(p)$ -process (see Equations 5 and 6 above). It is used to investigate the dynamic interactions between the endogenous variables. The  $(i, j)$ th coefficients of the matrices  $\Phi_s$  are thereby interpreted as the expected response of variable  $y_{i,t+s}$  to a unit change in variable

$y_{jt}$ . These effects can be accumulated through time,  $s = 1, 2, \dots$ , and hence one would obtain the simulated impact of a unit change in variable  $j$  to the variable  $i$  at time  $s$ . Aside of these impulse response coefficients, it is often conceivable to use orthogonal impulse responses as an alternative. This is the case, if the underlying shocks are less likely to occur in isolation, but when contemporaneous correlations between the components of the error process  $\mathbf{u}_t$  exist, i.e., the off-diagonal elements of  $\Sigma_{\mathbf{u}}$  are non-zero. The orthogonal impulse responses are derived from a Choleski decomposition of the error variance-covariance matrix:  $\Sigma_{\mathbf{u}} = PP^\top$  with  $P$  being a lower triangular. The moving average representation can then be transformed to:

$$\mathbf{y}_t = \Psi_0 \boldsymbol{\varepsilon}_t + \Psi_1 \boldsymbol{\varepsilon}_{t-1} + \dots, \quad (30)$$

with  $\boldsymbol{\varepsilon}_t = P^{-1}\mathbf{u}_t$  and  $\Psi_i = \Phi_i P$  for  $i = 0, 1, 2, \dots$  and  $\Psi_0 = P$ . Incidentally, because the matrix  $P$  is lower triangular, it follows that only a shock in the first variable of a VAR( $p$ )-process does exert an influence on all the remaining ones and that the second and following variables cannot have a direct impact on  $y_{1t}$ . Please note, that a different ordering of the variables might produce different outcomes with respect to the impulse responses. The non-uniqueness of the impulse responses can be circumvented by analyzing a set of endogenous variables in the SVAR framework.

Impulse response analysis has been implemented as a method for objects with class attribute of either `varest`, `svarest`, `svecest` or `vec2var`. These methods are utilizing the methods `Phi` and `Psi`, where applicable.

```
irf(x, impulse = NULL, response = NULL, n.ahead = 10, ortho = TRUE,
    cumulative = FALSE, boot = TRUE, ci = 0.95, runs = 100, seed = NULL, ...)
```

The impulse variables are set as a character vector `impulse` and the responses are provided likewise in the argument `response`. If either one is unset, then all variables are considered as impulses or responses, respectively. The default length of the impulse responses is set to 10 via argument `n.ahead`. The computation of orthogonal and/or cumulative impulse responses is controlled by the logical switches `ortho` and `cumulative`, respectively. Finally, confidence bands can be returned by setting `boot = TRUE` (default). The preset values are to run 100 replications and return 95% confidence bands. It is at the user's leisure to specify a `seed` for the random number generator. The standard percentile interval is calculated as  $CI_s = [s_{\gamma/2}^*, s_{(1-\gamma)/2}^*]$ , where  $s_{\gamma/2}^*$  and  $s_{(1-\gamma)/2}^*$  are the  $\gamma/2$  and  $(1 - \gamma)/2$  quantiles of the estimated bootstrapped impulse response coefficients  $\hat{\Phi}^*$  or  $\hat{\Psi}^*$  (see [Efron and Tibshirani 1993](#)). The `irf` method returns a list object with class attribute `varirf` for which `print` and `plot` methods do exist. Likewise to the `plot` method of objects with class attribute `varprd`, the user is requested to browse through the graphs for each variable by hitting the `<RETURN>` key, whence the method is called interactively. The appearance of the plots can be adjusted. The forecast error variance decomposition is based upon the orthogonal impulse response coefficient matrices  $\Psi_n$ . The FEVD allows the user to analyze the contribution of variable  $j$  to the  $h$ -step forecast error variance of variable  $k$ . If the element-wise squared orthogonal impulse responses are divided by the variance of the forecast error variance,  $\sigma_k^2(h)$ , the resultant is a percentage figure. The `fevd` method is available for conducting FEVD. Methods for objects of classes `varest`, `svarest`, `svecest` and `vec2var` do exist. Aside of the object itself, the argument `n.ahead` can be specified; its default value is 10.

```
fevd(x, n.ahead = 10, ...)
```

The method returns a list object with class attribute `varfevd` for which `print` and `plot` methods do exist. The list elements are the forecast error variances organized on a per-variable basis. The `plot` method for these objects is similar to the ones for objects with class attribute `varirf` and/or `varprd` and the appearance of the plots can be adjusted too.

## 4. Example

Functions and methods from the last section are now illustrated with a macro economic data set for Canada. It is shown how the results presented in [Breitung, Brüggemann, and Lütkepohl \(2004\)](#) can be replicated. However, the R~code snippets should illustrate the ease of application rather than commenting and interpreting the results in depth.

The authors investigated the Canadian labor market. They utilized the following series: labor productivity defined as the log difference between GDP and employment, the log of employment, the unemployment rate and real wages, defined as the log of the real wage index. These series are signified by “`prod`”, “`e`”, “`U`” and “`rw`”, respectively. The data is taken from the OECD data base and spans from the first quarter 1980 until the fourth quarter 2004. In a first step the package `vars` is loaded into the workspace. The Canadian data set which is included in the package `vars` is brought into memory.

```
R> library("vars")
R> data("Canada")
R> summary(Canada)
```

	e	prod	rw	U
Min.	:929	Min. :401	Min. :386	Min. : 6.70
1st Qu.	:935	1st Qu.:405	1st Qu.:424	1st Qu.: 7.78
Median	:946	Median :406	Median :444	Median : 9.45
Mean	:944	Mean :408	Mean :441	Mean : 9.32
3rd Qu.	:950	3rd Qu.:411	3rd Qu.:461	3rd Qu.:10.61
Max.	:962	Max. :418	Max. :470	Max. :12.77

```
R> plot(Canada, nc = 2, xlab = "")
```

A preliminary data analysis is conducted by displaying the summary statistics of the series involved as well as the corresponding time series plots (see Figure~1). In a next step, the authors conducted unit root tests by applying the Augmented Dickey-Fuller test regressions to the series (henceforth: ADF~test). The ADF~test has been implemented in the package `urca` as function `ur.df()`, for instance. The result of the ADF~tests are summarized in Table~2.<sup>4</sup>

```
R> adf1 <- summary(ur.df(Canada[, "prod"], type = "trend", lags = 2))
R> adf1
```

```
#####
# Augmented Dickey-Fuller Test Unit Root Test #
```

<sup>4</sup>In the following only R~code excerpts are shown. The R~code for producing the Tables and Figures below are provided in a separate file that accompanies this text.

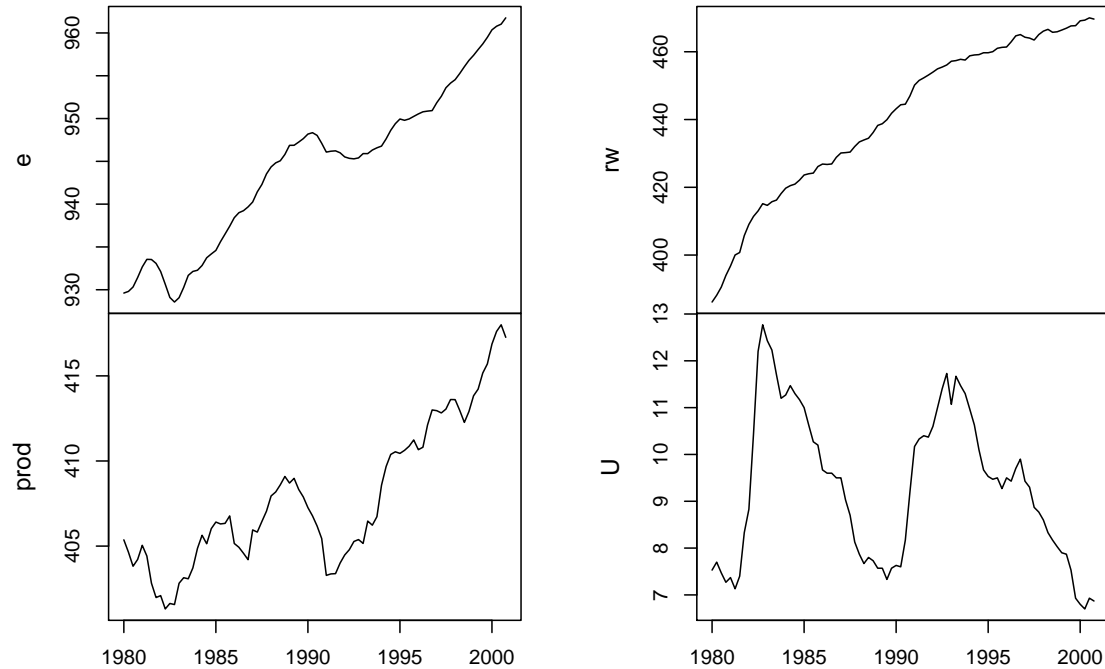
**Canada**

Figure 1: Canadian labor market time series.

```
#####
```

```
Test regression trend
```

```
Call:
```

```
lm(formula = z.diff ~ z.lag.1 + 1 + tt + z.diff.lag)
```

```
Residuals:
```

	Min	1Q	Median	3Q	Max
	-2.1992	-0.3899	0.0429	0.4191	1.7166

```
Coefficients:
```

	Estimate	Std. Error	t value	Pr(> t )
(Intercept)	30.41523	15.30940	1.99	0.051 .
z.lag.1	-0.07579	0.03813	-1.99	0.050 .
tt	0.01390	0.00642	2.16	0.034 *
z.diff.lag1	0.28487	0.11436	2.49	0.015 *
z.diff.lag2	0.08002	0.11609	0.69	0.493

---

Signif. codes: 0 '\*\*\*' 0.001 '\*\*' 0.01 '\*' 0.05 '.' 0.1 ' ' 1

Residual standard error: 0.685 on 76 degrees of freedom

Multiple R-squared: 0.135, Adjusted R-squared: 0.0899

F-statistic: 2.98 on 4 and 76 DF, p-value: 0.0244

Value of test-statistic is: -1.9875 2.3 2.3817

Critical values for test statistics:

	1pct	5pct	10pct
tau3	-4.04	-3.45	-3.15
phi2	6.50	4.88	4.16
phi3	8.73	6.49	5.47

```
R> adf2 <- summary(ur.df(diff(Canada[, "prod"]), type = "drift",
+   lags = 1))
R> adf2
```

```
#####
# Augmented Dickey-Fuller Test Unit Root Test #
#####
```

Test regression drift

Call:

```
lm(formula = z.diff ~ z.lag.1 + 1 + z.diff.lag)
```

Residuals:

	Min	1Q	Median	3Q	Max
	-2.0512	-0.3953	0.0782	0.4111	1.7513

Coefficients:

	Estimate	Std. Error	t value	Pr(> t )
(Intercept)	0.1153	0.0803	1.44	0.15
z.lag.1	-0.6889	0.1335	-5.16	1.8e-06 ***
z.diff.lag	-0.0427	0.1127	-0.38	0.71

---

Signif. codes: 0 '\*\*\*' 0.001 '\*\*' 0.01 '\*' 0.05 '.' 0.1 ' ' 1

Residual standard error: 0.697 on 78 degrees of freedom

Multiple R-squared: 0.361, Adjusted R-squared: 0.345

F-statistic: 22.1 on 2 and 78 DF, p-value: 2.53e-08



Variable	Deterministic terms	Lags	Test value	Critical values		
				1%	5%	10%
prod	constant, trend	2	-1.99	-4.04	-3.45	-3.15
$\Delta$ prod	constant	1	-5.16	-3.51	-2.89	-2.58
e	constant, trend	2	-1.91	-4.04	-3.45	-3.15
$\Delta$ e	constant	1	-4.51	-3.51	-2.89	-2.58
U	constant	1	-2.22	-3.51	-2.89	-2.58
$\Delta$ U		0	-4.75	-2.60	-1.95	-1.61
rw	constant, trend	4	-2.06	-4.04	-3.45	-3.15
$\Delta$ rw	constant	3	-2.62	-3.51	-2.89	-2.58
$\Delta$ rw	constant	0	-5.60	-3.51	-2.89	-2.58

Table 2: ADF $\sim$ tests for Canadian data.

Value of test-statistic is: -5.1604 13.318

Critical values for test statistics:

```

      1pct  5pct 10pct
tau2 -3.51 -2.89 -2.58
phi1  6.70  4.71  3.86

```

It can be concluded that all time series are integrated of order one. Please note, that the reported critical values differ slightly from the ones that are reported in [Breitung \*et al.\* \(2004\)](#). The authors utilized the software **JMulTi** ([Lütkepohl and Krätzig 2004](#)) in which the critical values of [Davidson and MacKinnon \(1993\)](#) are used, whereas in the function `ur.df()` the critical values are taken from [Dickey and Fuller \(1981\)](#) and [Hamilton \(1994\)](#).

In an ensuing step, the authors determined an optimal lag length for an unrestricted VAR for a maximal lag length of eight.

```
R> VARselect(Canada, lag.max = 8, type = "both")
```

```
$selection
```

```

AIC(n)  HQ(n)  SC(n) FPE(n)
      3      2      1      3

```

```
$criteria
```

```

              1              2              3              4              5              6
AIC(n) -6.2725791 -6.6366697 -6.7711769 -6.6346092 -6.3981322 -6.3077048
HQ(n)  -5.9784294 -6.1464203 -6.0848278 -5.7521604 -5.3195837 -5.0330565
SC(n)  -5.5365580 -5.4099679 -5.0537944 -4.4265460 -3.6993884 -3.1182803
FPE(n)  0.0018898  0.0013195  0.0011660  0.0013632  0.0017821  0.0020442
              7              8
AIC(n) -6.0707273 -6.0615969
HQ(n)  -4.5999792 -4.3947490

```

```
SC(n)  -2.3906220 -1.8908109
FPE(n)  0.0027686  0.0030601
```

According to the AIC and FPE the optimal lag number is  $p = 3$ , whereas the HQ criterion indicates  $p = 2$  and the SC criterion indicates an optimal lag length of  $p = 1$ . They estimated for all three lag orders a VAR including a constant and a trend as deterministic regressors and conducted diagnostic tests with respect to the residuals. In the R~code example below, the relevant commands are exhibited for the VAR(1) model. First, the variables have to be reordered in the same sequence as in [Breitung \*et al.\* \(2004\)](#). This step is necessary, because otherwise the results of the multivariate Jarque-Bera test, in which a Choleski decomposition is employed, would differ slightly from the reported ones in [Breitung \*et al.\* \(2004\)](#). In the R~code lines below the estimation of the VAR(1) as well as the summary output and the diagram of fit for equation “e” is shown.

```
R> Canada <- Canada[, c("prod", "e", "U", "rw")]
R> p1ct <- VAR(Canada, p = 1, type = "both")
R> p1ct
```

VAR Estimation Results:

=====

Estimated coefficients for equation prod:

=====

Call:

prod = prod.l1 + e.l1 + U.l1 + rw.l1 + const + trend

prod.l1	e.l1	U.l1	rw.l1	const	trend
0.963137	0.012912	0.211089	-0.039094	16.243407	0.046131

Estimated coefficients for equation e:

=====

Call:

e = prod.l1 + e.l1 + U.l1 + rw.l1 + const + trend

prod.l1	e.l1	U.l1	rw.l1	const	trend
0.194650	1.238923	0.623015	-0.067763	-278.761211	-0.040660

Estimated coefficients for equation U:

=====

Call:

U = prod.l1 + e.l1 + U.l1 + rw.l1 + const + trend

prod.l1	e.l1	U.l1	rw.l1	const	trend
-0.123192	-0.248442	0.391580	0.065808	259.982010	0.034517

Estimated coefficients for equation rw:

=====

Call:

rw = prod.l1 + e.l1 + U.l1 + rw.l1 + const + trend

prod.l1	e.l1	U.l1	rw.l1	const	trend
-0.223087	-0.051044	-0.368640	0.948909	163.024531	0.071422

R> summary(plct, equation = "e")

VAR Estimation Results:

=====

Endogenous variables: prod, e, U, rw

Deterministic variables: both

Sample size: 83

Log Likelihood: -207.525

Roots of the characteristic polynomial:

0.95 0.95 0.904 0.751

Call:

VAR(y = Canada, p = 1, type = "both")

Estimation results for equation e:

=====

e = prod.l1 + e.l1 + U.l1 + rw.l1 + const + trend

	Estimate	Std. Error	t value	Pr(> t )	
prod.l1	0.1947	0.0361	5.39	7.5e-07	***
e.l1	1.2389	0.0863	14.35	< 2e-16	***
U.l1	0.6230	0.1693	3.68	0.00043	***
rw.l1	-0.0678	0.0283	-2.40	0.01899	*
const	-278.7612	75.1830	-3.71	0.00039	***
trend	-0.0407	0.0197	-2.06	0.04238	*

---

Signif. codes: 0 '\*\*\*' 0.001 '\*\*' 0.01 '\*' 0.05 '.' 0.1 ' ' 1

Residual standard error: 0.47 on 77 degrees of freedom

Multiple R-Squared: 1, Adjusted R-squared: 1

F-statistic: 5.58e+07 on 6 and 77 DF, p-value: <2e-16

Covariance matrix of residuals:

	prod	e	U	rw
prod	0.46952	0.0677	-0.0413	0.00214

```
e      0.06767  0.2210 -0.1320 -0.08279
U      -0.04128 -0.1320  0.1216  0.06374
rw      0.00214 -0.0828  0.0637  0.59317
```

Correlation matrix of residuals:

```
      prod      e      U      rw
prod  1.00000  0.210 -0.173  0.00406
e      0.21008  1.000 -0.805 -0.22869
U      -0.17275 -0.805  1.000  0.23731
rw      0.00406 -0.229  0.237  1.00000
```

```
R> plot(p1ct, names = "e")
```

The resulting graphic is displayed in Figure~2. Next, it is shown how the diagnostic tests are conducted for the VAR(1) model. The results of all diagnostic tests, i.e., for the VAR(1), VAR(2) and VAR(3) model, are provided in Table~3 and the graphics of the `varcheck` object `arch1` for the employment equation and the OLS-CUSUM tests for the VAR(1) model are shown in Figures~3 and 4, respectively.

```
R> ser11 <- serial.test(p1ct, lags.pt = 16, type = "PT.asymptotic")
R> ser11$serial
```

Portmanteau Test (asymptotic)

```
data: Residuals of VAR object p1ct
Chi-squared = 233.5, df = 240, p-value = 0.606
```

```
R> norm1 <- normality.test(p1ct)
R> norm1$jb.mul
```

\$JB

JB-Test (multivariate)

```
data: Residuals of VAR object p1ct
Chi-squared = 9.9189, df = 8, p-value = 0.2708
```

\$Skewness

Skewness only (multivariate)

```
data: Residuals of VAR object p1ct
Chi-squared = 6.356, df = 4, p-value = 0.1741
```

\$Kurtosis

Diagram of fit and residuals for e

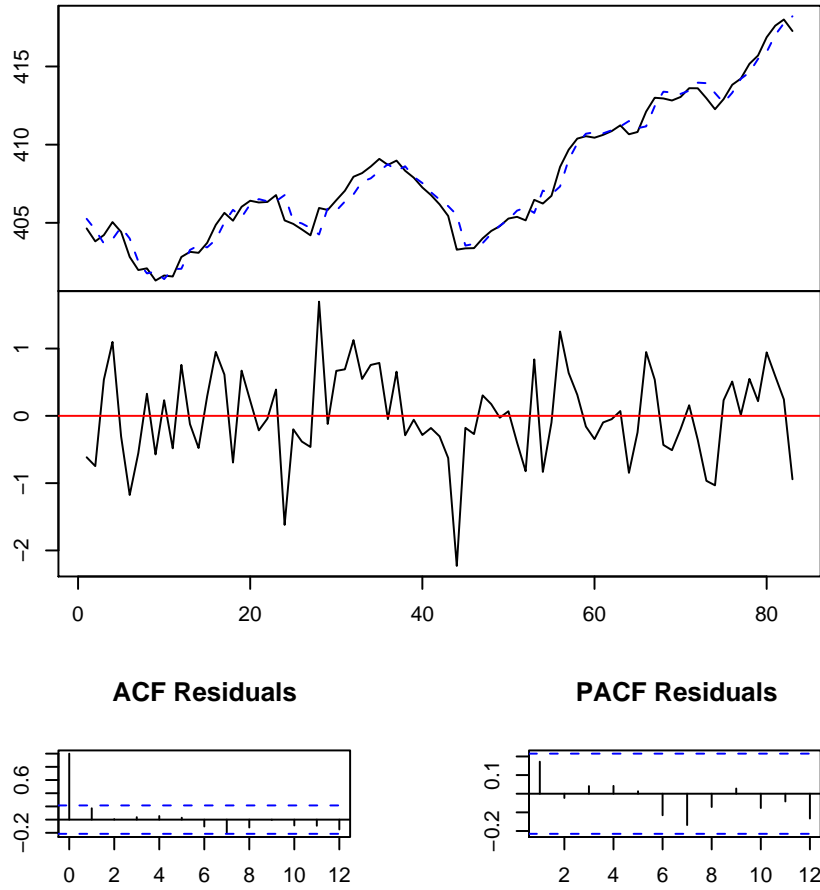


Figure 2: Plot of VAR(1) for equation “e”.

Model	$Q_{16}$	$p\tilde{\text{value}}$	$Q_{16}^*$	$p\tilde{\text{value}}$	$JB_4$	$p\tilde{\text{value}}$	$MARCH_5$	$p\tilde{\text{value}}$
$p = 3$	174.0	0.96	198.0	0.68	9.66	0.29	512.0	0.35
$p = 2$	209.7	0.74	236.1	0.28	2.29	0.97	528.1	0.19
$p = 1$	233.5	0.61	256.9	0.22	9.92	0.27	570.1	0.02

Table 3: Diagnostic tests of VAR( $p$ ) specifications for Canadian data.

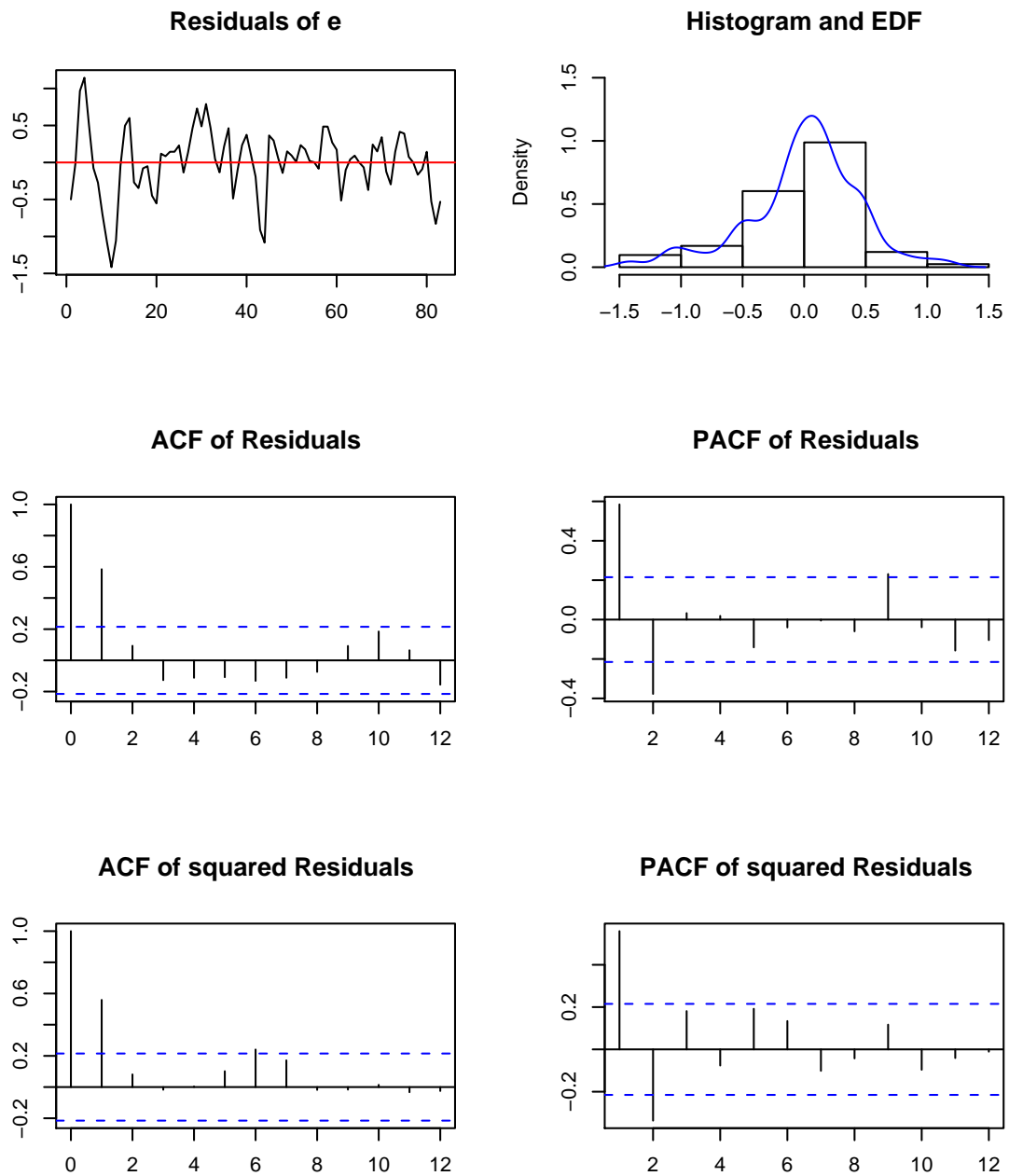


Figure 3: Diagnostic plot of VAR(1) for equation "e".

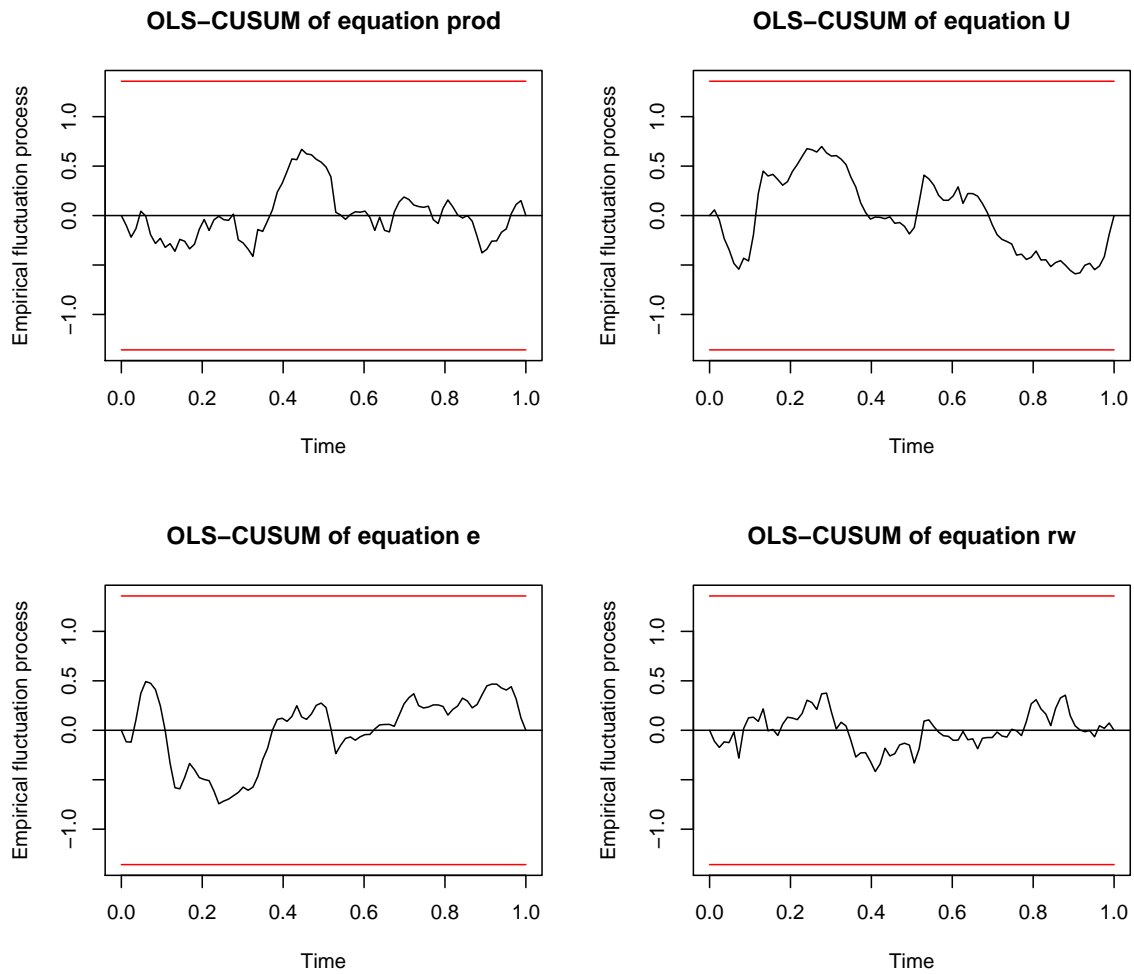


Figure 4: OLS-CUSUM test of VAR(1).

Kurtosis only (multivariate)

data: Residuals of VAR object p1ct  
 Chi-squared = 3.5629, df = 4, p-value = 0.4684

```
R> arch1 <- arch.test(p1ct, lags.multi = 5)
R> arch1$arch.mul
```

ARCH (multivariate)

data: Residuals of VAR object p1ct  
 Chi-squared = 570.14, df = 500, p-value = 0.01606

```
R> plot(arch1, names = "e")
R> plot(stability(p1ct), nc = 2)
```

	Test Statistics		Critical Values		
$\mathcal{H}_0$	$p = 3$	$p = 2$	90%	95%	99%
$r = 0$	84.92	86.12	59.14	62.99	70.05
$r = 1$	36.42	37.33	39.06	42.44	48.45
$r = 2$	18.72	15.65	22.76	25.32	30.45
$r = 3$	3.85	4.10	10.49	12.25	16.26

Table 4: Johansen cointegration tests for Canadian system.

Given the diagnostic test results the authors concluded that a VAR(1)-specification might be too restrictive. They argued further, that although some of the stability tests do indicate deviations from parameter constancy, the time-invariant specification of the VAR(2) and VAR(3) model will be maintained as tentative candidates for the following cointegration analysis.

The authors estimated a VECM whereby a deterministic trend has been included in the cointegration relation. The estimation of these models as well as the statistical inference with respect to the cointegration rank can be swiftly accomplished with the function `ca.jo()`. Although the following R~code examples are using functions contained in the package **urca**, it is however beneficial to reproduce these results for two reasons: the interplay between the functions contained in package **urca** and **vars** is exhibited and it provides an understanding of the then following SVEC specification.

```
R> summary(ca.jo(Canada, type = "trace", ecdet = "trend", K = 3,
+   spec = "transitory"))
R> summary(ca.jo(Canada, type = "trace", ecdet = "trend", K = 2,
+   spec = "transitory"))
```

The outcome of the trace tests is provided in Table~4. These results do indicate one cointegration relationship. The reported critical values differ slightly from the ones that are reported in Table 4.3 of [Breitung et al. \(2004\)](#). The authors used the values that are contained in [Johansen \(1995\)](#), whereas the values from [Osterwald-Lenum \(1992\)](#) are used in the function `ca.jo()`. In the R~code snippet below the VECM is re-estimated with this restriction and a normalization of the long-run relationship with respect to real wages. The results are shown in Table~5.

```
R> vecm <- ca.jo(Canada[, c("rw", "prod", "e", "U")], type = "trace",
+   ecdet = "trend", K = 3, spec = "transitory")
R> vecm.r1 <- cajorls(vecm, r = 1)
```

For a just identified SVEC model of type B one needs  $\frac{1}{2}K(K - 1) = 6$  linear independent restrictions. It is further reasoned from the Beveridge-Nelson decomposition that there are  $k^* = r(K - r) = 3$  shocks with permanent effects and only one shock that exerts a temporary effect, due to  $r = 1$ . Because the cointegration relation is interpreted as a stationary wage-setting relation, the temporary shock is associated with the wage shock variable. Hence, the



Vector	prod	e	U	rw	trend
$\hat{\beta}^\top$	0.545 (0.90)	-0.013 (-0.02)	1.727 (1.19)	1.000	-0.709 (-2.57)
$\hat{\alpha}^\top$	-0.012 (-0.92)	-0.016 (-2.16)	-0.009 (-1.49)	-0.085 (-5.71)	

Table 5: Cointegration vector and loading parameters (with  $t$ -statistics in parentheses).

four entries in the last column of the long-run impact matrix  $\Xi B$  are set to zero. Because this matrix is of reduced rank, only  $k^*r = 3$  linear independent restrictions are imposed thereby. It is therefore necessary to set  $\frac{1}{2}k^*(k^* - 1) = 3$  additional elements to zero. The authors assumed constant returns of scale and therefore productivity is only driven by output shocks. This reasoning implies zero coefficients in the first row of the long-run matrix for the variables employment, unemployment and real wages, hence the elements  $\Xi B_{1,j}$  for  $j = 2, 3, 4$  are set to zero. Because  $\Xi B_{1,4}$  has already been set to zero, only two additional restrictions have been added. The last restriction is imposed on the element  $B_{4,2}$ . Here, it is assumed that labor demand shocks do not exert an immediate effect on real wages.

In the R-code example below the matrix objects LR and SR are set up accordingly and the just-identified SVEC is estimated with function `SVEC()`. In the call to the function `SVEC()` the argument `boot = TRUE` has been employed such that bootstrapped standard errors and hence  $t$ -statistics can be computed for the structural long-run and contemporaneous coefficients.

```
R> vecm <- ca.jo(Canada[, c("prod", "e", "U", "rw")], type = "trace",
+   ecdet = "trend", K = 3, spec = "transitory")
R> SR <- matrix(NA, nrow = 4, ncol = 4)
R> SR[4, 2] <- 0
R> LR <- matrix(NA, nrow = 4, ncol = 4)
R> LR[1, 2:4] <- 0
R> LR[2:4, 4] <- 0
R> svec <- SVEC(vecm, LR = LR, SR = SR, r = 1, lrtest = FALSE, boot = TRUE,
+   runs = 100)
R> summary(svec)
```

```
SVEC Estimation Results:
=====
```

```
Call:
```

```
SVEC(x = vecm, LR = LR, SR = SR, r = 1, lrtest = FALSE, boot = TRUE,
     runs = 100)
```

```
Type: B-model
```

```
Sample size: 81
```

```
Log Likelihood: -161.838
```

```
Number of iterations: 10
```

Estimated contemporaneous impact matrix:

	prod	e	U	rw
prod	0.5840	0.0743	-0.15258	0.0690
e	-0.1203	0.2614	-0.15510	0.0898
U	0.0253	-0.2672	0.00549	0.0498
rw	0.1117	0.0000	0.48377	0.4879

Estimated standard errors for impact matrix:

	prod	e	U	rw
prod	0.0803	0.1047	0.2125	0.0660
e	0.0705	0.0596	0.1665	0.0402
U	0.0527	0.0433	0.0568	0.0309
rw	0.1462	0.0000	0.6142	0.0888

Estimated long run impact matrix:

	prod	e	U	rw
prod	0.791	0.000	0.000	0
e	0.202	0.577	-0.492	0
U	-0.159	-0.341	0.141	0
rw	-0.153	0.596	-0.250	0

Estimated standard errors for long-run matrix:

	prod	e	U	rw
prod	0.152	0.0000	0.000	0
e	0.230	0.1801	0.550	0
U	0.115	0.0884	0.149	0
rw	0.184	0.1549	0.264	0

Covariance matrix of reduced form residuals (\*100):

	prod	e	U	rw
prod	37.464	-2.10	-0.251	2.51
e	-2.096	11.49	-6.927	-4.47
U	-0.251	-6.93	7.454	2.98
rw	2.509	-4.47	2.978	48.46

The results are summarized in the Tables~6 and~7. The values of the  $t$ -statistics differ slightly from the reported ones in Breitung *et al.* (2004) which can be attributed to sampling. In the R~code example above only 100 runs have been executed, whereas in Breitung *et al.* (2004) 2000 repetitions have been used.

The authors investigated further if labor supply shocks do have no long-run impact on unemployment. This hypothesis is mirrored by setting  $\Xi B_{3,3} = 0$ . Because one more zero restriction has been added to the long-run impact matrix, the SVEC model is now over-identified. The validity of this over-identification restriction can be tested with a LR test. In the R~code example below first the additional restriction has been set and then the SVEC is re-estimated by using the `upate` method. The result of the LR test is contained in the returned list as named element `LRover`.

Equation	$\varepsilon_t^{\text{gdp}}$	$\varepsilon_t^{\text{Labor}^d}$	$\varepsilon_t^{\text{Labor}^s}$	$\varepsilon_t^{\text{wage}}$
Output	0.58 (7.28)	0.07 (0.71)	-0.15 (-0.72)	0.07 (1.05)
Labor demand	-0.12 (-1.71)	0.26 (4.39)	-0.16 (-0.93)	0.09 (2.23)
Unemployment	0.03 (0.48)	-0.27 (-6.16)	0.01 (0.10)	0.05 (1.61)
Real wages	0.11 (0.76)	0.00	0.48 (0.79)	0.49 (5.50)

Table 6: Estimated coefficients of the contemporaneous impact matrix (with  $t$ -statistics in parentheses).

Equation	$\varepsilon_t^{\text{gdp}}$	$\varepsilon_t^{\text{Labor}^d}$	$\varepsilon_t^{\text{Labor}^s}$	$\varepsilon_t^{\text{wage}}$
Output	0.79 (5.21)	0.00	0.00	0.00
Labor demand	0.20 (0.88)	0.58 (3.20)	-0.49 (-0.89)	0.00
Unemployment	-0.16 (-1.38)	-0.34 (-3.86)	0.14 (0.95)	0.00
Real wages	-0.15 (-0.83)	0.60 (3.85)	-0.25 (-0.95)	0.00

Table 7: Estimated coefficients of the long-run impact matrix (with  $t$ -statistics in parentheses).

```
R> LR[3, 3] <- 0
R> svec.oi <- update(svec, LR = LR, lrtest = TRUE, boot = FALSE)
R> svec.oi$LRover
```

LR overidentification

```
data: vecm
Chi^2 = 6.0745, df = 1, p-value = 0.01371
```

The value of the test statistic is 6.07 and the  $p$ -value of this  $\chi^2(1)$ -distributed variable is 0.014. Therefore, the null hypothesis that shocks to the labor supply do not exert a long-run effect on unemployment has to be rejected for a significance level of 5%.

In order to investigate the dynamic effects on unemployment, the authors applied an impulse response analysis. The impulse response analysis shows the effects of the different shocks, i.e., output, labor demand, labor supply and wage, to unemployment. In the R-code example below the `irf` method for objects with class attribute `svecest` is employed and the argument `boot = TRUE` has been set such that confidence bands around the impulse response trajectories can be calculated.

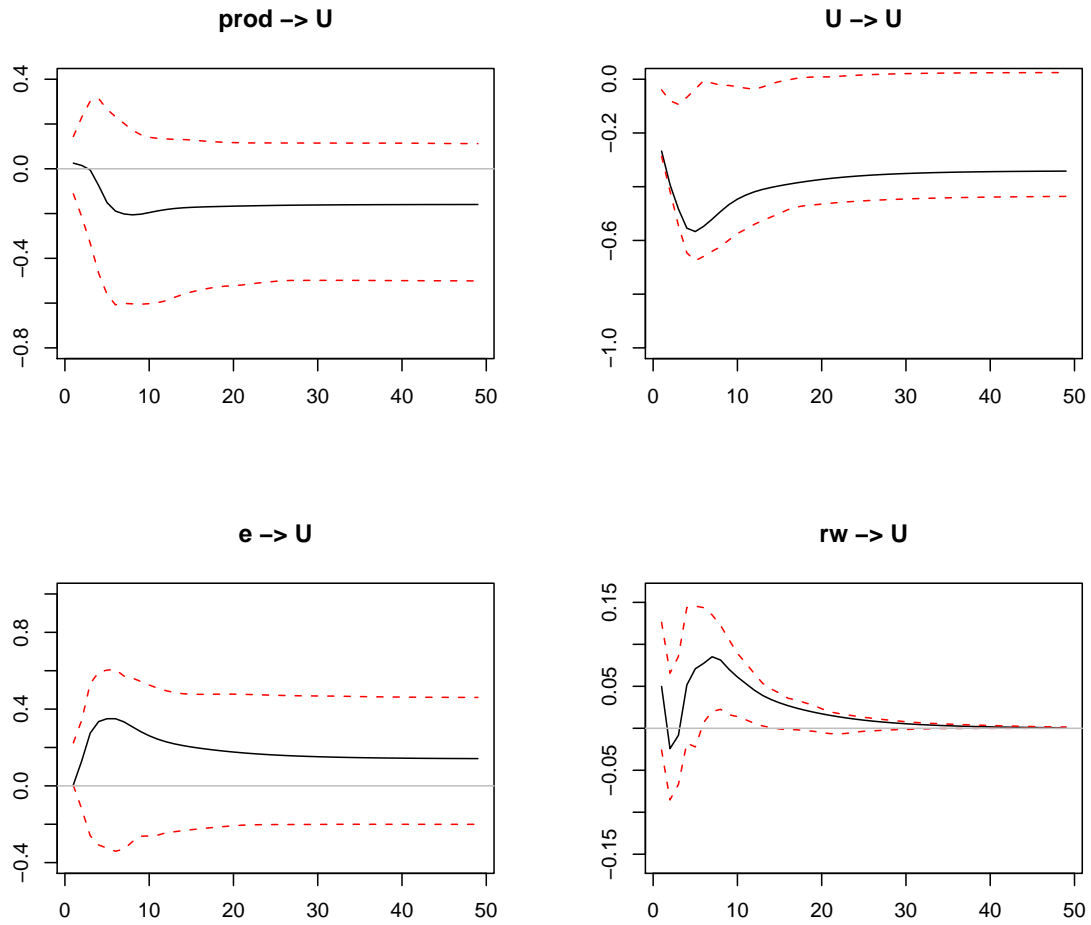


Figure 5: Responses of unemployment to economic shocks with a 95% bootstrap confidence interval.

```
R> svec.irf <- irf(svec, response = "U", n.ahead = 48, boot = TRUE)
R> plot(svec.irf)
```

The outcome of the IRA is exhibited in Figure~5.

In a final step, a forecast error variance decomposition is conducted with respect to unemployment. This is achieved by applying the `fevd` method to the object with class attribute `svecest`.

```
R> fevd.U <- fevd(svec, n.ahead = 48)$U
```

The authors report only the values for selected quarters. These results are displayed in Table~8.

Period	$\varepsilon_t^{\text{gdp}}$	$\varepsilon_t^{\text{Labor}^d}$	$\varepsilon_t^{\text{Labor}^s}$	$\varepsilon_t^{\text{wage}}$
1	0.01	0.96	0.00	0.03
4	0.01	0.78	0.21	0.01
8	0.05	0.69	0.24	0.01
12	0.08	0.68	0.23	0.01
24	0.10	0.69	0.21	0.01
48	0.12	0.70	0.18	0.00

Table 8: Forecast error variance decomposition of Canadian unemployment.

## 5. Summary

In this paper it has been described how the different functions and methods contained in the package **vars** are designed and offer the researcher a fairly easy to use environment for conducting VAR, SVAR and SVEC analysis. This is primarily achieved through methods for impulse response functions, forecast error variance decomposition, prediction as well as tools for diagnostic testing, determination of a suitable lag length for the model and stability / causality analysis.

The package **vars** complements the package **urca** in the sense that most of the above described tools are available for VECM that can be swiftly transformed to their level-VAR representation whence the cointegrating rank has been determined.

## 6. Computational details

The package's code is purely written in R (R Development Core Team 2008) and S3-classes with methods have been utilized. It is shipped with a `NAMESPACE` and a `ChangeLog` file. It has dependencies to **MASS** (Venables and Ripley 2002), **strucchange** (Zeileis *et al.* 2002) and **urca** (Pfaff 2006). R itself as well as these packages can be obtained from CRAN at <http://CRAN.R-project.org/>. Furthermore, daily builds of package **vars** are provided on R-Forge (see <http://R-Forge.R-project.org/projects/vars/>). It has been published under GPL version 2 or newer. The results used in this paper were obtained using R 2.7.0 with packages **vars** 1.3-8, **strucchange** 1.3-3, **urca** 1.1-6 and **MASS** 7.2-42.

## Acknowledgments

I would like to thank the anonymous reviewers and Achim Zeileis for valuable feedback on this article as well as the suggested improvements for package **vars**.

## References

- Amisano G, Giannini C (1997). *Topics in Structural VAR Econometrics*. 2nd edition. Springer-Verlag, Berlin.
- Banerjee A, Dolado J, Galbraith J, Hendry D (1993). *Co-Integration, Error-Correction, and the Econometric Analysis of Non-Stationary Data*. Oxford University Press, New York.
- Bera AK, Jarque CM (1980). “Efficient Tests for Normality, Homoscedasticity and Serial Independence of Regression Residuals.” *Economics Letters*, **6**(3), 255–259.
- Bera AK, Jarque CM (1981). “Efficient Tests for Normality, Homoscedasticity and Serial Independence of Regression Residuals: Monte Carlo Evidence.” *Economics Letters*, **7**(4), 313–318.
- Blanchard O, Quah D (1989). “The Dynamic Effects of Aggregate Demand and Supply Disturbances.” *The American Economic Review*, **79**(4), 655–673.
- Brandt PT, Appleby J (2007). *MSBVAR: Bayesian Vector Autoregression Models, Impulse Responses and Forecasting*. R~package version~0.3.1, URL <http://CRAN.R-project.org/package=MSBVAR>.
- Breitung J, Brüggemann R, Lütkepohl H (2004). “Structural Vector Autoregressive Modeling and Impulse Responses.” In H~Lütkepohl, M~Krätzig (eds.), *Applied Time Series Econometrics*, chapter~4, pp. 159–196. Cambridge University Press, Cambridge.
- Breusch TS (1978). “Testing for Autocorrelation in Dynamic Linear Models.” *Australien Economic Papers*, **17**, 334–355.
- Britton E, Fisher PG, Whitley JD (1998). “The Inflation Report Projections: Understanding the Fan Chart.” *Bank of England Quarterly Bulletin*, **38**, 30–37.
- Davidson R, MacKinnon J (1993). *Estimation and Inference in Econometrics*. Oxford University Press, London.
- Dickey DA, Fuller WA (1981). “Likelihood Ratio Statistics for Autoregressive Time Series with a Unit Root.” *Econometrica*, **49**, 1057–1072.
- Edgerton D, Shukur G (1999). “Testing Autocorrelation in a System Perspective.” *Econometric Reviews*, **18**, 343–386.
- Efron B, Tibshirani RJ (1993). *An Introduction to the Bootstrap*. Chapman & Hall, New York.
- Engle RF (1982). “Autoregressive Conditional Heteroscedasticity with Estimates of the Variance of United Kingdom Inflation.” *Econometrica*, **50**, 987–1007.
- Engle RF, Granger CWJ (1987). “Co-Integration and Error Correction: Representation, Estimation and Testing.” *Econometrica*, **55**, 251–276.

- Gilbert PD (1993). “State Space and ARMA Models: An Overview of the Equivalence.” *Working Paper 93-4*, Bank of Canada, Ottawa, Canada. URL <http://www.bank-banque-canada.ca/pgilbert/>.
- Gilbert PD (1995). “Combining VAR Estimation and State Space Model Reduction for Simple Good Predictions.” *Journal of Forecasting: Special Issue on VAR Modelling*, **14**, 229–250.
- Gilbert PD (2000). “A Note on the Computation of Time Series Model Roots.” *Applied Economics Letters*, **7**, 423–424.
- Godfrey LG (1978). “Testing for Higher Order Serial Correlation in Regression Equations when the Regressors Include Lagged Dependent Variables.” *Econometrica*, **46**, 1303–1310.
- Granger CWJ (1981). “Some Properties of Time Series Data and Their Use in Econometric Model Specification.” *Journal of Econometrics*, **16**, 121–130.
- Hamilton JD (1994). *Time Series Analysis*. Princeton University Press, Princeton.
- Hendry DF (1995). *Dynamic Econometrics*. Oxford University Press, Oxford.
- Jarque CM, Bera AK (1987). “A Test for Normality of Observations and Regression Residuals.” *International Statistical Review*, **55**, 163–172.
- Johansen S (1995). *Likelihood Based Inference in Cointegrated Vector Autoregressive Models*. Oxford University Press, Oxford.
- Lütkepohl H (2006). *New Introduction to Multiple Time Series Analysis*. Springer-Verlag, New York.
- Lütkepohl H, Krätzig M (2004). *Applied Time Series Econometrics*. Cambridge University Press, Cambridge.
- Osterwald-Lenum M (1992). “A Note with Quantiles of the Asymptotic Distribution of the Maximum Likelihood Cointegration Rank Test Statistics.” *Oxford Bulletin of Economics and Statistics*, **55**(3), 461–472.
- Pfaff B (2006). *Analysis of Integrated and Cointegrated Time Series with R*. Springer-Verlag, New York. URL <http://CRAN.R-project.org/package=urca>.
- Pfaff B (2008). “VAR, SVAR and SVEC Models: Implementation Within R Package vars.” *Journal of Statistical Software*, **27**(4). URL <http://www.jstatsoft.org/v27/i04/>.
- R Development Core Team (2008). *R: A Language and Environment for Statistical Computing*. R Foundation for Statistical Computing, Vienna, Austria. ISBN 3-900051-07-0, URL <http://www.R-project.org/>.
- Sims CA (1980). “Macroeconomics and Reality.” *Econometrica*, **48**, 1–48.
- Venables WN, Ripley BD (2002). *Modern Applied Statistics with S*. 4th edition. Springer-Verlag, New York.
- Würtz D (2007). *fArma: Rmetrics – ARMA Time Series Modelling*. R package version 260.72, URL <http://CRAN.R-project.org/package=fArma>.

Zeileis A, Leisch F, Hornik K, Kleiber C (2002). “**strucchange**: An R Package for Testing for Structural Change in Linear Regression Models.” *Journal of Statistical Software*, **7**(2), 1–38. URL <http://www.jstatsoft.org/v07/i02/>.

**Affiliation:**

Bernhard Pfaff  
61476 Kronberg im Taunus, Germany  
E-mail: [bernhard@pfaffikus.de](mailto:bernhard@pfaffikus.de)  
URL: <http://www.pfaffikus.de>