

rrcov

Object Oriented Framework for Robust
Multivariate Analysis

UML diagrams

March 4, 2009

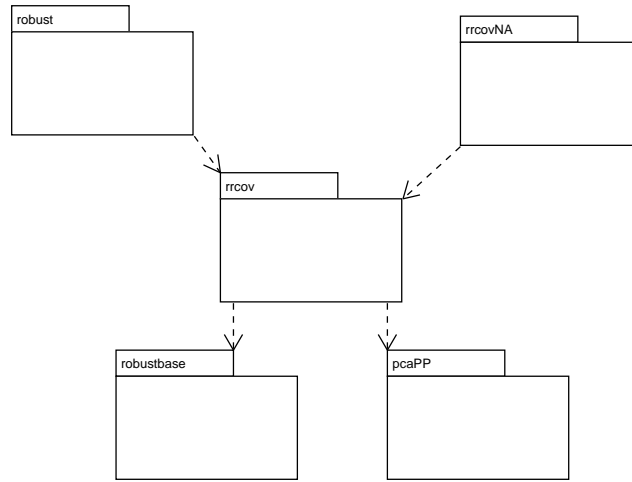


Figure 1: Class diagram: Package structure of the framework. The main package containing most of it is **rrcov** and **robustbase** and **pcaPP** are used. The framework is used by **robust** and extended by the hypothetical package **rrcovNA** which could add estimators with options for handling missing values.

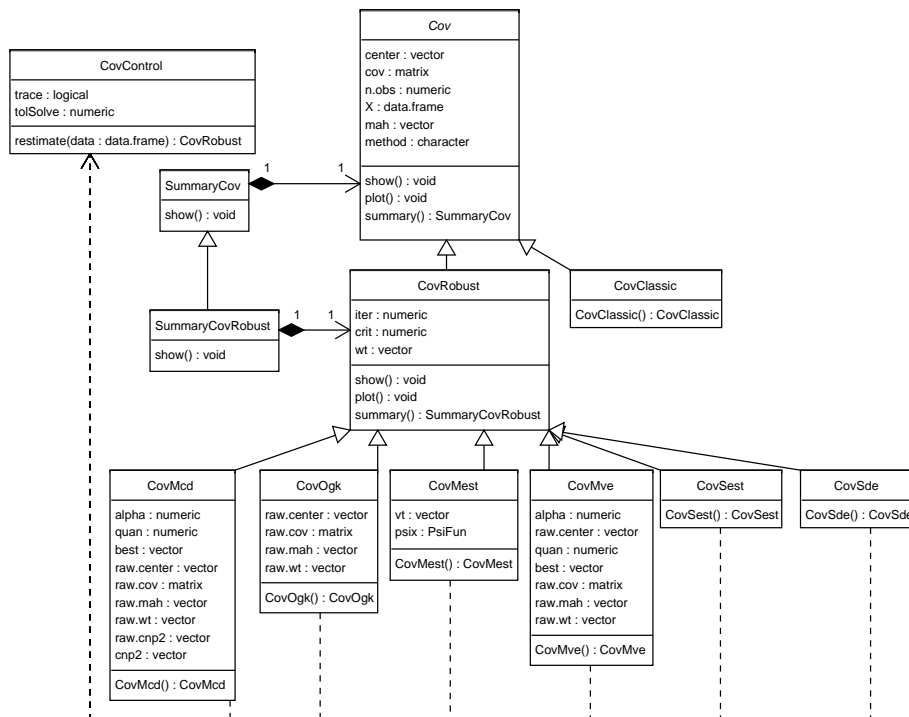


Figure 2: Class diagram: Robust multivariate location and scatter estimation

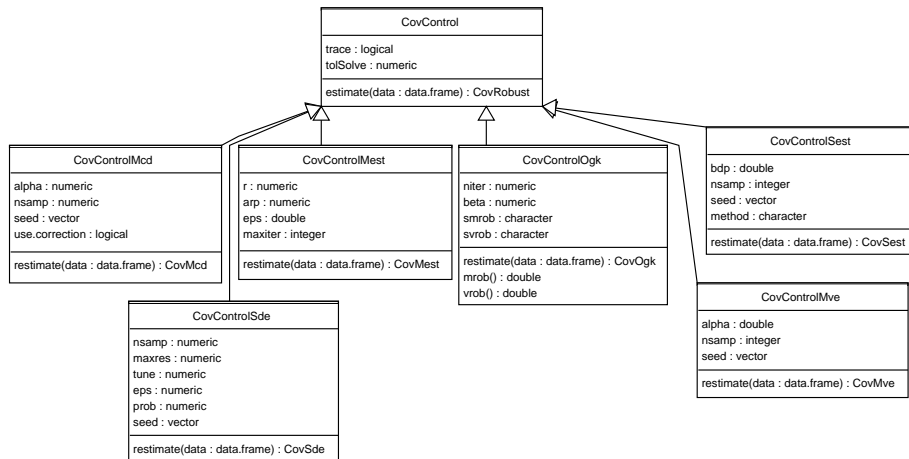


Figure 3: Class diagram: Control classes for robust multivariate location and scatter estimation

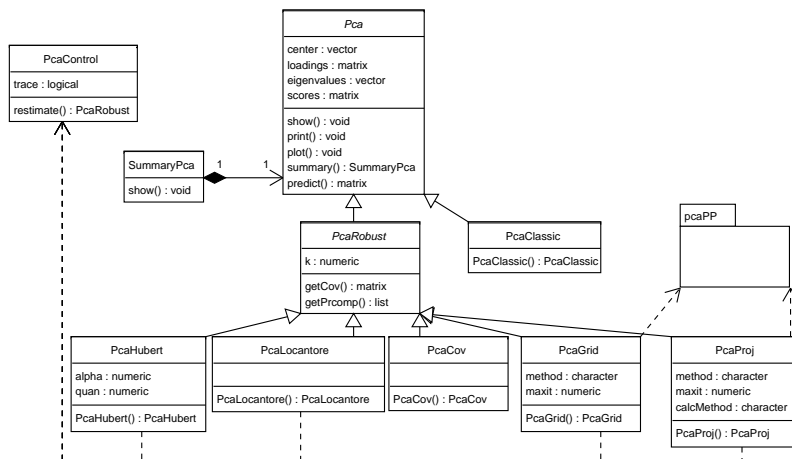


Figure 4: Class diagram: Principal components analysis (PCA).

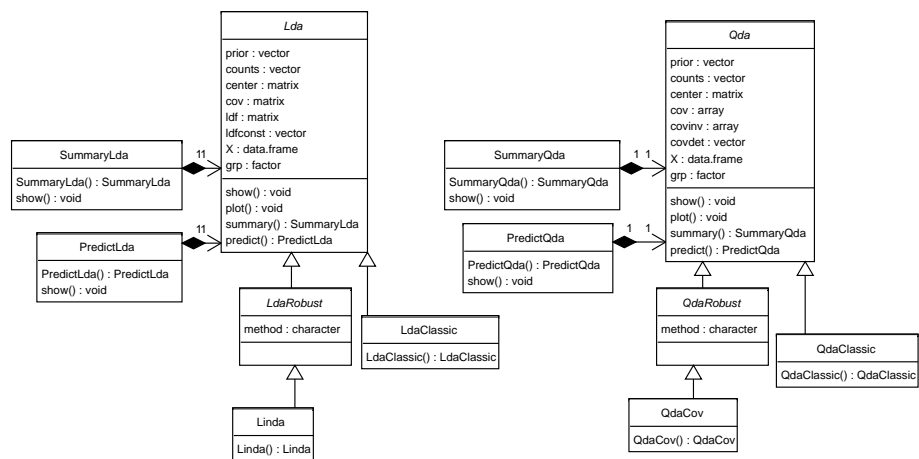


Figure 5: Class diagram: Linear (LDA) and Quadratic (QDA) Discriminant Analysis.