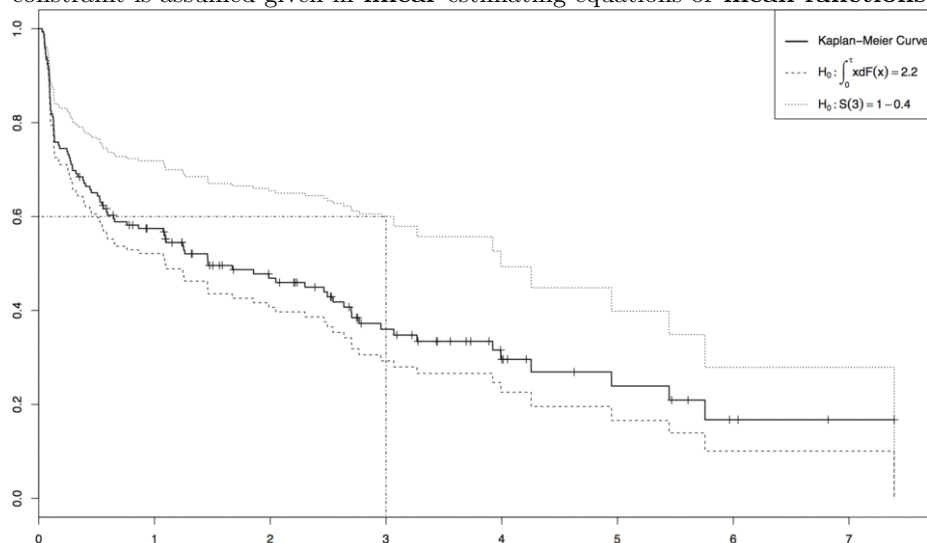


KMC

The Kaplan-Meier estimator is very popular in analysis of survival data. However, it is not easy to compute the *constrained* Kaplan-Meier. Current computational method uses expectationmaximization algorithm to achieve this, but can be slow at many situations. In this package we give a recursive computational algorithm for the *constrained* Kaplan-Meier estimator. The constraint is assumed given in **linear** estimating equations or **mean functions**.



We also illustrate how this leads to the empirical likelihood ratio test with right censored data and apply it to test non-parametric [AFT](#) problem. The proposed has a significant speed advantage over EM algorithm.

This package is written and maintained by Yifan Yang (<mailto:yifan.yang@uky.edu>), and co-authored by Dr Zhou (<http://www.ms.uky.edu/~mai/>). The package is released on CRAN (<http://cran.r-project.org/web/packages/kmc/>).

Installation

One can install the development version using

```
library(devtools);  
install_github('kmc', 'yfyang86');
```

Examples

One/two constraints

Run the following code in R with only one null hypothesis $E[X] = \int x dF(x) = 3.7$:

```
library(kmc)
x <- c(1, 1.5, 2, 3, 4.2, 5, 6.1, 5.3, 4.5, 0.9, 2.1, 4.3)
d <- c(1, 1, 0, 1, 0, 1, 1, 1, 1, 0, 0, 1)
f <- function(x) {
  x - 3.7
}
g = list(f = f)
result = kmc.solve(x, d, g)
print(result)
```

A Recursive Formula for the Kaplan-Meier Estimator with Constraint
Information:

Number of Constraints: 1
lamda(s): -1.439612

	Log-likelihood(Ha)	Log-likelihood(H0)	-2LLR	p-Value(df=1)
Est	-17.5198	-17.8273	0.6150	0.4329

If we add another constraint: $E[X^2] = 16.5$, then

```
> myfun5 <- function(x) {
+   x^2 - 16.5
+ }
> # construnct g as a LIST!
>
> g = list(f1 = f, f2 = myfun5)
> re0 <- kmc.solve(x, d, g)
> re0
```

A Recursive Formula for the Kaplan-Meier Estimator with Constraint
Information:

Number of Constraints: 2
lamda(s): -0.4148702 -0.1546575

	Log-likelihood(Ha)	Log-likelihood(H0)	-2LLR	p-Value(df=2)
Est	-17.5198	-17.8345	0.6293	0.7301

Contour Plot

If there were two constraints, we could plot a contour plot for the log-likelihood. Typically, 30×30 data points, are used to draw the contour plot, which means the computation repeats 900 times.

```
ZZ <- plotkmc2D(re0)
```

This package offers a naive contour plot. One can use ZZ to draw contour plot with the help of `ggplot2`.

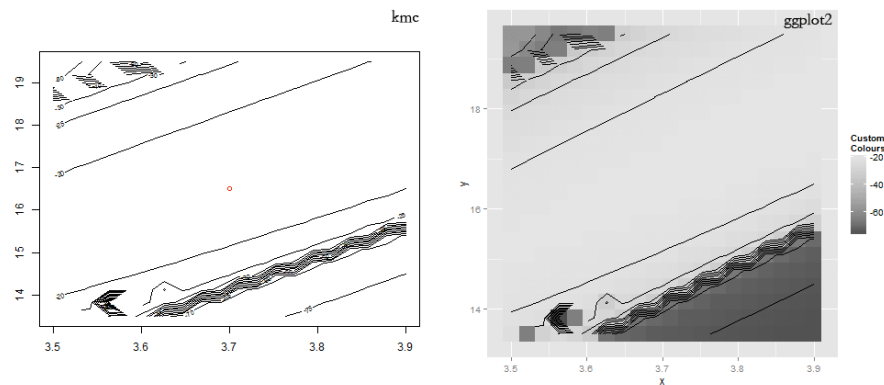


Figure 1: contour

A careful tuning version is

```
#!/usr/local/bin/Rscript
# file: TESTKMC.R
args <- commandArgs(TRUE)

t1=as.numeric(args[1])
t2=as.numeric(args[2])

library(kmc)
x <- c(1, 1.5, 2, 3, 4.2, 5, 6.1, 5.3, 4.5, 0.9, 2.1, 4.3)
d <- c(1, 1, 0, 1, 0, 1, 1, 1, 1, 0, 0, 1)
f_1 <- function(x) {x - t1}
```

```

f_2 <- function(x) {x^2-t2}
g <- list(f1=f_1,f2=f_2);

re0 <- kmc.solve(x, d, g)

ZZ <- plotkmc2D(re0,range0 = c(0.1, .4, 30))

```

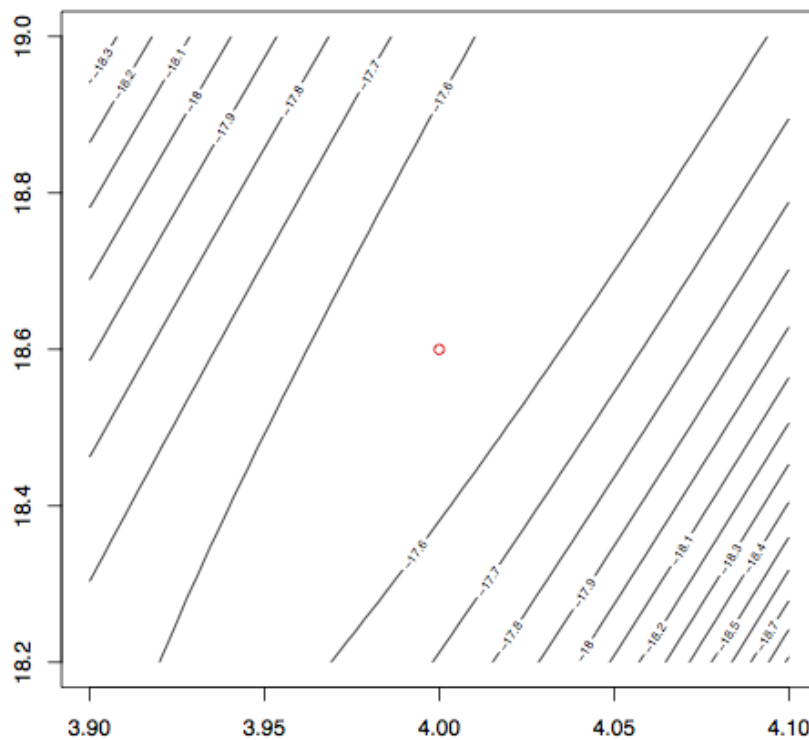


Figure 2: contour2

This version uses a 30 by 30 grid to construct the contour plot on a iMac2007 2.0Hz Core2 machine and only spend (2s to load R):

```

time Rscript TESTKMC.R 4.0 18.6
real0m20.202s

```

```
user0m18.817s
sys0m0.240s
```

Real Data Example

The speed advantage of KMC algorithm could be used in time consuming analysis such as drawing contour plot. In this real data example, we illustrate the proposed algorithm to analyze the Stanford heart transplants program described in (Miller 1982). There were 157 patients who received transplants collected in the data, among which 55 were still alive and 102 were deceased. Besides, the survival time were scaled by 365.25. We could draw a contour plot of intercept and slope for a AFT model.

```
LL= 50
beta0 <- 3.52016
beta1 <- -0.01973458 #-0.0185
beta.grid <- function(x0,range,n0,type="sq",u=5){
  n0 = as.double(n0)
  if (type=="sq"){
    o1 <- c(
      -range*(u*(n0:1)^2)/(u*n0^2),0,
      range*(u*(1:n0)^2)/(u*n0^2)
    )
  }else{
    if (type=='sqrt'){
      o1 <- c(
        -range*(u*sqrt(n0:1))/(u*sqrt(n0)),0,
        range*(u*sqrt(1:n0))/(u*sqrt(n0))
      )
    }else{
      o1=c(
        -range*(n0:1)/n0,
        0,
        range*(1:n0)/n0
      )
    }
  }
  return(
    x0+o1
  );
}

beta.0 <- beta.grid(beta0,0.05,LL,"1")
beta.1 <- beta.grid(beta1,.00151,LL,"1")#0.00051

set.seed(1234)
```

```

y=log10(stanford5$time)+runif(152)/1000

d <- stanford5$status

oy = order(y,-d)
d=d[oy]
y=y[oy]
x=cbind(1,stanford5$age)[oy,]

ZZ=matrix(0,2*LL+1,2*LL+1)

library(kmc)
tic=0
for(jj in 1:(2*LL+1)){
  for(ii in 1:(2*LL+1)){
    beta=c(beta.0[ii],beta.1[jj])
    ZZ[jj,ii]=kmc.bjtest(y,d,x=x,beta=beta,init.st="naive")$"-2LLR"
  }
}
ZZ2<-ZZ
ZZ[ZZ<0]=NA ## when KMC.BJTEST fails to converge, it'll return a negative value.

range(ZZ,finite=T) -> zlim
floor.d<-function(x,n=4){floor(x*10^n)/(10^n)}

postscript("C:/Temp/Fig2_1.eps",width=7,height=7)
contour(
  y=beta.0,
  x=beta.1,
  ZZ,
  zlim=c(0,.17),
  levels=unique(floor.d(
    beta.grid(x0=mean(zlim),range=diff(zlim)/2,n0=15,type="sqrt",u=10),
    4)),
  ylab="Intercept",
  xlab=expression(beta[Age])
)

```

The countour plot is

Another one concentrates on two hypothesizes on survival function are considered:
 $H_0^{(1)} : \text{Mean} = \int x dF(x) = \mu$; $H_0^{(2)} : F(3) = \int I(x \leq 3) dF(x) = \nu$.

Here, 30×30 combinations of (μ, ν) near NPMLE(0.5569,3.061), i.e. value plugged in with Kaplan Meier estimation, were used to construct a contour plot of the constrained log empirical likelihood. On the same computer, the program finished in 17 seconds. EM based method could also reproduce the same plot,

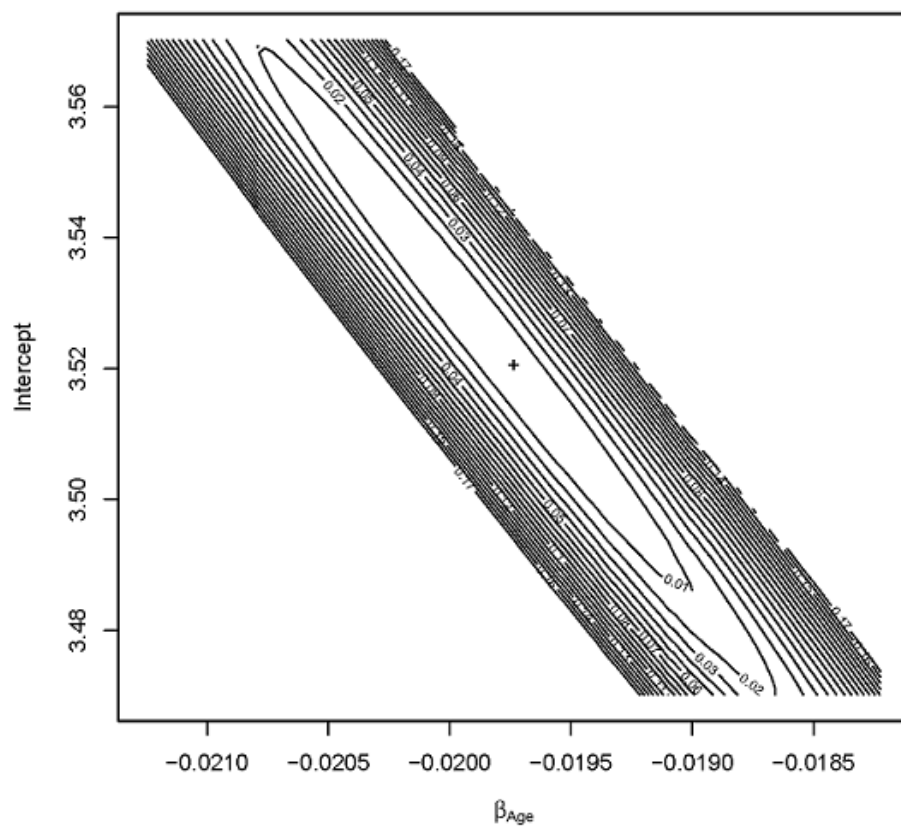


Figure 3: contour

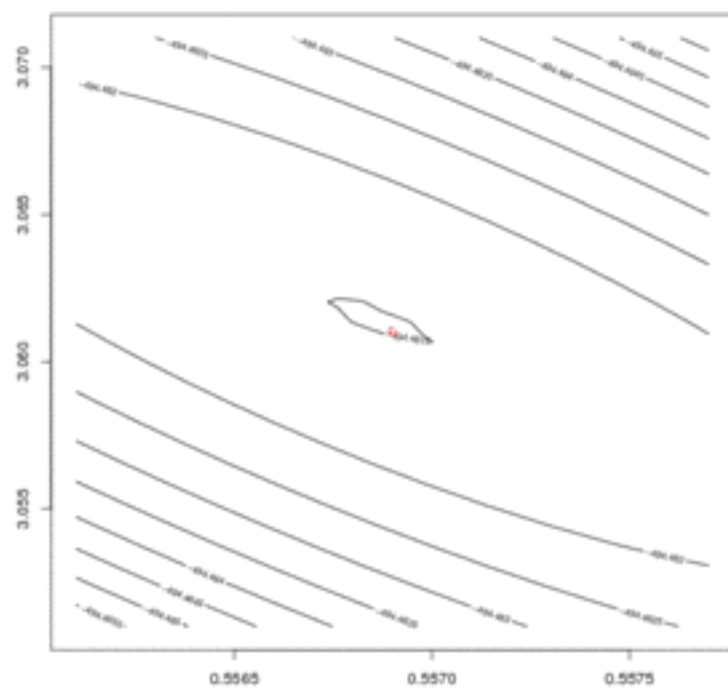


Figure 4: contour2

but the time spend is not evaluated as some values fails to converge within 2 minutes.

Initial value

There are known issues on some scenario when dealing with more than one constraint. According to our simulation, automatic tuning strategy fails under some constraints. One can always use proper initial values, and I will add additional strategies in future work.

In current developing version, this package depends on `rootSolve::multiroot`, which provides a lot of options.

Update

1. After `rootSolve` was updated, `kmc` doesn't work on option: `em.boost=T` or `using.C=T`. The safe option to calculate the model is

```
kmc.solve( x,d,g,em.boost=F,using.num=T,using.Fortran=T,using.C=F,em.it=10)
```

This issue is related to initial value selection problem.

2. The next version may remove the dependency on `rootSolve` and [solution](#) is a trying which depends on [Eigen](#).
3. I will delete the dependency on `Rcpp` as it prevent the package works on Mac 10.6.
4. introduce a C++ port for `emplik::el.cen.EM` and it has been approved in `emplik` package.
5. A redesigned data structure with C++ implement: `nocopy_kmc_data` in [src](#).

Bug Report

Please contact Yifan Yang (<mailto:yifan.yang@uky.edu>), or leave feed back on the github page.