

Total copy-number segmentation using CBS

Henrik Bengtsson

October 15, 2013

Abstract

The Circular Binary Segmentation (CBS) method partitions a genome into segments of constant total copy numbers (TCNs) based on DNA microarray data. The method also calls CBS was designed to work with data from any DNA microarray technology and generation, including Affymetrix and Illumina.

This document shows how to use the *PSCBS* package to run CBS on a tumor sample.

Keywords: copy numbers, genomic aberrations

This vignette is distributed as part of the PSCBS package, which is available on CRAN (<http://cran.r-project.org/>). The authors very much appreciate feedback on this document.

Contents

1	Background	3
2	Preparing data to be segmented	3
2.1	Locus-level total copy-number signals	3
2.2	Dropping TCN outliers	3
3	CBS segmentation	3
3.1	Skipping centromeres and other large gaps	3
3.2	Identifying TCN segments	4
3.3	Displaying genomic TCN profiles	5
4	Calling segments	5
4.1	Results from calling TCN states	5
5	Saving results	6
5.1	Writing segments to a tab-delimited text file	6
6	Experimental	6
6.1	Pruning segmentation profile	6
6.2	Report generation	6

1 Background

We will here use a small example data set to illustrate how to setup the data in a format suitable for CBS, how to identify segments, how to call them, and how to plot and export the segmentation results. The statistical model and the algorithm behind CBS is explained in detail in Olshen *et al.* (2004); Venkatraman and Olshen (2007).

2 Preparing data to be segmented

The CBS method requires total copy-number (TCN) estimates. More precisely, it requires TCN ratios for a sample of interest relative to a reference (y). The genomic location of the loci in form of chromosome and physical position are also required.

2.1 Locus-level total copy-number signals

In this example we will use a small example data set part of the *PSCBS* package. It can be loaded as:

```
> data <- PSCBS::exampleData("paired.chr01")
> data <- data[, c("chromosome", "x", "CT")]
> colnames(data)[3] <- "y"
> str(data)
'data.frame': 73346 obs. of 3 variables:
 $ chromosome: int 1 1 1 1 1 1 1 1 1 1 ...
 $ x          : int 1145994 2224111 2319424 2543484 2926730 2941694 3084986 3155127..
 $ y          : num 1.625 1.071 1.406 1.18 0.856 ...
```

In addition to the mandatory fields (chromosome, x, and C this data set also contains The latter will not be used here.

2.2 Dropping TCN outliers

There may be some outliers among the TCNs. In CBS (Olshen *et al.*, 2004; Venkatraman and Olshen, 2007), the authors propose to drop those before segmentation, which can be done by:

```
> data <- dropSegmentationOutliers(data)
```

Dropping TCN outliers is optional.

3 CBS segmentation

3.1 Skipping centromeres and other large gaps

The CBS method does not take the physical locations (in units of nucleotides) of the loci in to account when segmenting the data, only their relative ordering along the genome. This means that after having ordered the loci along genome, it will treat two "neighboring" loci that are on both sides of the centromere equally as two neighboring loci that are only few hundred bases apart. This may introduce erroneous change points that appears to be inside the centromere and biological impossible interpretation of the identified copy-number states. The same issues occur for other large gaps of the genome where there are no observed signals.

To avoid this, although not mandatory, we will locate all gaps of the genome where there are no observed loci. As a threshold we will consider a region to be a "gap" if the distance between the two closest loci is greater than 1Mb.

```
> gaps <- findLargeGaps(data, minLength = 1e+06)
> gaps
  chromosome      start      end  length
1           1 120992604 141510002 20517398
```

which shows that there is a 20.5Mb long gap between 121.0Mb and 141.5Mb on Chromosome 1. This is the centromere of Chromosome 1. Gaps cannot be specified directly. Instead they need to be given as part of a set of "known" segments, which is done as:

```
> knownSegments <- gapsToSegments(gaps)
> knownSegments
  chromosome      start      end  length
1           1      -Inf 1.21e+08      Inf
2           1 1.21e+08 1.42e+08 20517398
3           1 1.42e+08      Inf      Inf
```

Below, we will use this to tell CBS to segment Chromosome 1 in three independent segments, where the first segment is from the beginning of the chromosome (hence '-Inf') to 120.1Mb, the second from 120.1-141.5Mb (the above gap), and the third is from 141.5Mb to the end of the chromosome (hence '+Inf'). Just as CBS segments chromosomes independently of each other, it also segments previously known segments independently of each other. Specifying known segments is optional.

3.2 Identifying TCN segments

We are now ready to segment the locus-level TCN signals. This is done by¹:

```
> fit <- segmentByCBS(data, knownSegments = knownSegments,
+   seed = 48879, verbose = -10)
```

Note that this may take several minutes when applied to whole-genome data.

The result of the segmentation is a set of segments identified to have the same underlying TCN levels. In this particular case, 9 TCN segments were found:

```
> getSegments(fit, simplify = TRUE)
  sampleName chromosome      start      end nbrOfLoci mean
1      <NA>           1    554484 86993745    26846 1.38
2      <NA>           1 86993745 87005243      2 3.19
3      <NA>           1 87005243 120992603   10647 1.39
4      <NA>           1 120992604 141510002      0  NA
5      <NA>           1 141510003 185527989   13434 2.07
6      <NA>           1 185527989 199122065    4018 2.71
7      <NA>           1 199122065 206512702    2755 2.59
8      <NA>           1 206512702 206521352     14 3.87
9      <NA>           1 206521352 247165315   15581 2.64
```

¹We fix the random seed in order for the results of this vignette to be exactly reproducible.

Note how Segment #4 has no mean-level estimates. It is because it corresponds to the centromere (the gap) that was identified above. CBS did indeed try to segment it, but since there are no data points, all estimates are missing values.

3.3 Displaying genomic TCN profiles

To plot the TCN segmentation results, do:

```
plotTracks(fit)
```

which by default displays TCN as in Figure 1. To zoom in on a particular region, do:

```
plotTracks(fit, tracks="tcn,c1,c2", xlim=c(120,244)*1e6)
```

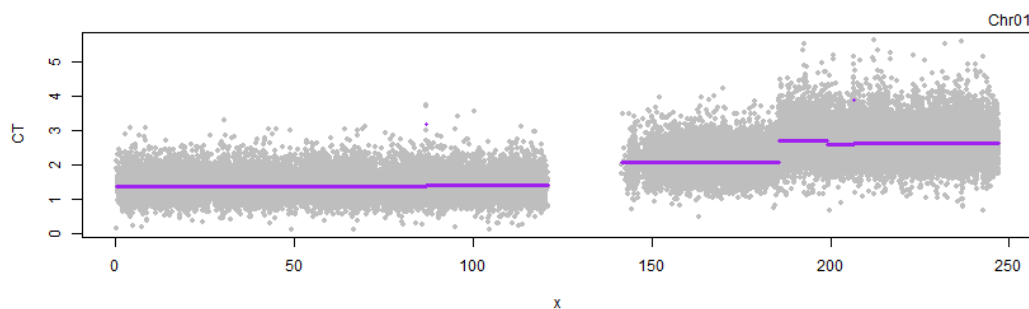


Figure 1: Segments identified by CBS. **Top:** The TCN signals with the TCN mean levels (purple).

4 Calling segments

TBA.

4.1 Results from calling TCN states

All calls are appended to the segmentation results as logical columns:

```
> getSegments(fit, simplify = TRUE)
```

	sampleName	chromosome	start	end	nbrOfLocs	mean
1	<NA>	1	554484	86993745	26846	1.38
2	<NA>	1	86993745	87005243	2	3.19
3	<NA>	1	87005243	120992603	10647	1.39
4	<NA>	1	120992604	141510002	0	NA
5	<NA>	1	141510003	185527989	13434	2.07
6	<NA>	1	185527989	199122065	4018	2.71
7	<NA>	1	199122065	206512702	2755	2.59
8	<NA>	1	206512702	206521352	14	3.87
9	<NA>	1	206521352	247165315	15581	2.64

5 Saving results

5.1 Writing segments to a tab-delimited text file

To write the TCN segmentation results to file, do:

```
pathname <- writeSegments(fit, name="MySample", simplify=TRUE)
```

6 Experimental

In this section we illustrate some of the ongoing and future work of the PSCBS package. Please be aware that these methods are very much under construction, possibly incomplete and in worst case even incorrect.

6.1 Pruning segmentation profile

By using hierarchical cluster of the segment means it is possible to prune the TCN profile such that change points with very small absolute changes are dropped. If change points are dropped this way, this results in a smaller number of segments, which are hence longer.

```
> fitP <- pruneByHClust(fit, h = 0.25, verbose = -10)
```

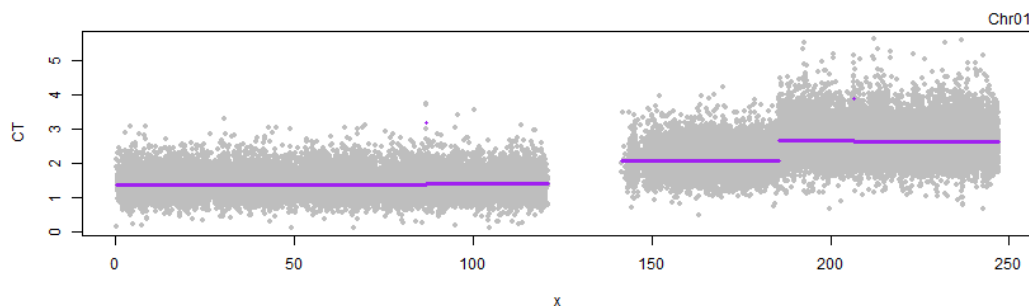


Figure 2: Pruned TCN segments plotted as in Figure 1.

6.2 Report generation

A multipage PDF report that contains both whole-genome and per-chromosome summaries and figures can be generated by:

```
> report(fit, sampleName="CBS", studyName="CBS-Ex", verbose=-10)
```

By default, the reports are written to directory `reports/<studyName>/` under the current working directory. In addition to the PDF, that directory also contains subdirectory `figures/` holding all generated figure files (e.g. PNGs and PDFs) for easy including elsewhere.

References

- Olshen, A. B., Venkatraman, E. S., Lucito, R., and Wigler, M. (2004). Circular binary segmentation for the analysis of array-based dna copy number data. *Biostatistics*, **5**(4), 557–572.
- Venkatraman, E. S. and Olshen, A. B. (2007). A faster circular binary segmentation algorithm for the analysis of array CGH data. *Bioinformatics*, **23**(6), 657–663.

Appendix

Session information

- R version 3.0.2 Patched (2013-10-12 r64048), x86_64-w64-mingw32
- Locale: LC_COLLATE=C, LC_CTYPE=English_United States.1252, LC_MONETARY=English_United States.1252, LC_NUMERIC=C, LC_TIME=English_United States.1252
- Base packages: base, datasets, grDevices, graphics, methods, stats, utils
- Other packages: DNACopy 1.36.0, PSCBS 0.38.4, R.devices 2.7.2, R.methodsS3 1.5.2, R.oo 1.15.8, R.utils 1.27.1
- Loaded via a namespace (and not attached): R.cache 0.8.1, R.rsp 0.9.28, matrixStats 0.8.12, tools 3.0.2

This report was automatically generated using `rfile()` of the R.rsp package. Total processing time after RSP-to-R translation was 19.59 secs.